

AIN SHAMS UNIVERSITY  
Education Strategy Administration  
Central E-Learning Unit

# ASU Virtual Microscopy High-Resolution Images

## Platform User Guides

Annotator edition October 2021





# This guide will help you to:

1

1- Log in to the ASU VM platform

2

2- Change your preset password

3

3- Choose slides or images of your course

4

4- Annotate slides or images with a new annotation

5

5- Edit previous annotation

6

6- Download all annotations

7

7- Get the Share link and embed on your LMS course

8

8- Use features on the slide viewer

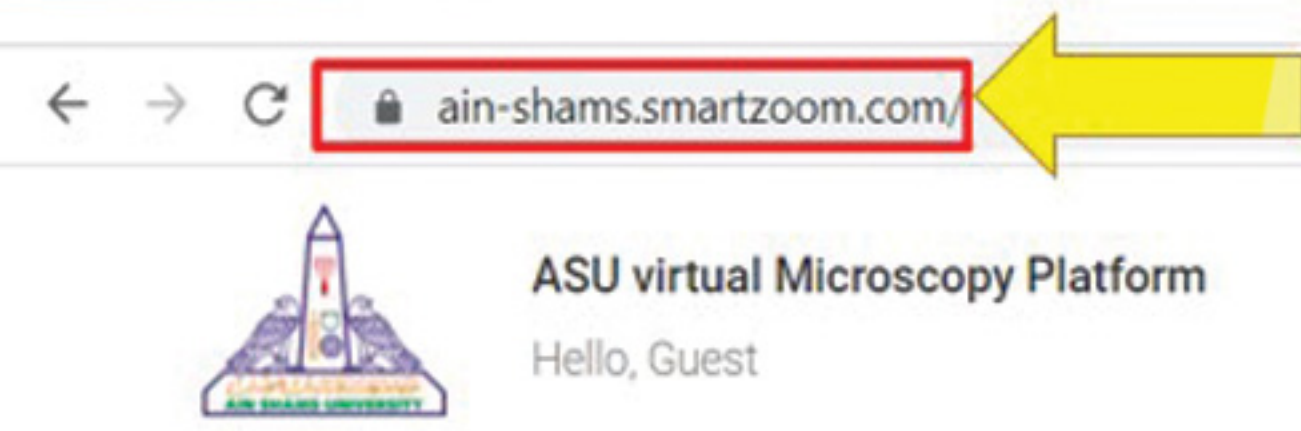




# 1- log in to the platform

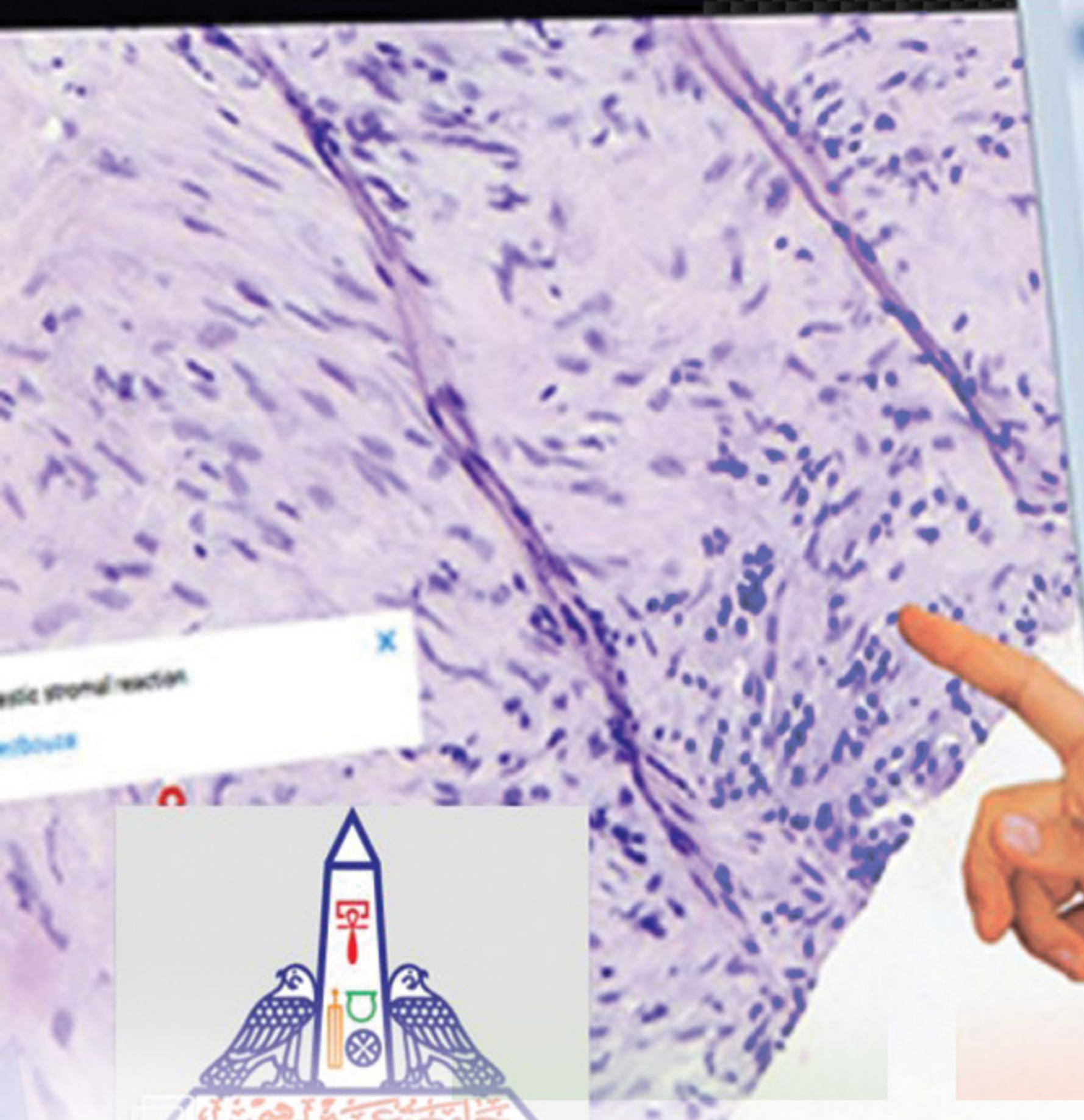






1- Enter the platform url in the address bar of your browser :  
Ain-shams.smartzoom.com

Welcome to Ain Shams University Virtual Microscopy Platform



Click on your faculty name :

- Faculty of Medicine
- Faculty of Pharmacy
- Faculty of Dentistry
- Faculty of Agriculture
- Faculty of Science
- Faculty of Women
- Faculty of Education
- Faculty of Veterinary Medicine
- Faculty of Engineering

2- Click on the name of your faculty







## Faculty of Medicine

Welcome to the Faculty of Medicine

Virtual Microscopy platform

Enter your official email and the password: Microscope21

Login Register

@ esa.elearning@asu.edu.eg

.....

Login

Forgot Password

كلية الطب

Powered by Smart In Media - SmartZoom® ClassRoom







Faculty of Dentistry  
Hello, esa.elearning@asu.edu.eg

esa.elearning@asu.edu.eg


Click on your email on the top right corner > click on slide manager



- Slide-Manager
- Logout

### FODe Virtual Microscopy and High Resolution Images

Welcome to the Virtual Microscopy platform



Faculty of Dentistry



User Guide





# 2- Change your password





Ain Shams University

Slide-Manager

Profile

Collapse menu

Language Site Default

Name

First Name ELearning

Last Name Central Unit

Display name publicly as esa.elearning@asu.edu.eg

Contact Info

Email (required) esa.elearning@asu.edu.eg  
If you change this, we will send you a

Account Management

New Password Generate Password

Custom User-Fields

Security Groups

User Course Groups Select

University

ger

Language Site Default

Name

First Name ELearning

Last Name Central Unit

Display name publicly as esa.elearning@asu.edu.eg

Contact Info

Email (required) esa.elearning@asu.edu.eg  
If you change this, we will send you an email at your new address to confirm it.

Account Management

New Password j8W#ktlh7GvhBtkpr#fkJS  
Strong

Custom User-Fields

Security Groups

Account Management

New Password ..... Show Car  
Strong

Custom User-Fields

Security Groups

User Course Groups Select

User-Groups

Groups Search...  
No matches found

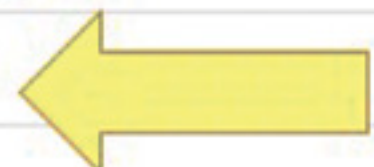
Update Profile






- Slide-Manager
- Profile
- Collapse menu

Slide-Manager  Click on slide manager

- Course-Structure
- Biology
  - Faculty of Agriculture
  - Faculty of Dentistry
  - Faculty of Education
  - Faculty of Engineering
  - Faculty of Medicine  Click on your faculty name here
  - Faculty of Pharmacy
  - Faculty of Science
  - Faculty of Veterinary Medicine
  - Faculty of Women
  - Others
  - User Guide

Slide-Manager Editor



Please select a slide first





### Course-Structure

- Biology
- Faculty of Agriculture
- Faculty of Dentistry
- Faculty of Education
- Faculty of Engineering
  - Trial
- Faculty of Medicine
  - Human Anatomy
  - Hematology
  - Histology
  - Dermatopathology
  - Pathology
    - Postgraduate Pathology
      - Path-PG-CVS
        - Arteriitis temporalis
        - False Aneurysm, prosthesis
        - False Aneurysm, prosthesis
        - Atherosclerosis, Aorta
        - Atherosclerosis, Aorta

Click on your faculty name > course name > folder name > slide name

### Slide-Viewer: Arteriitis temporalis

Annotate Image Share image

Select annotate image to open annotator window



The selected slide will appear in the slide viewer

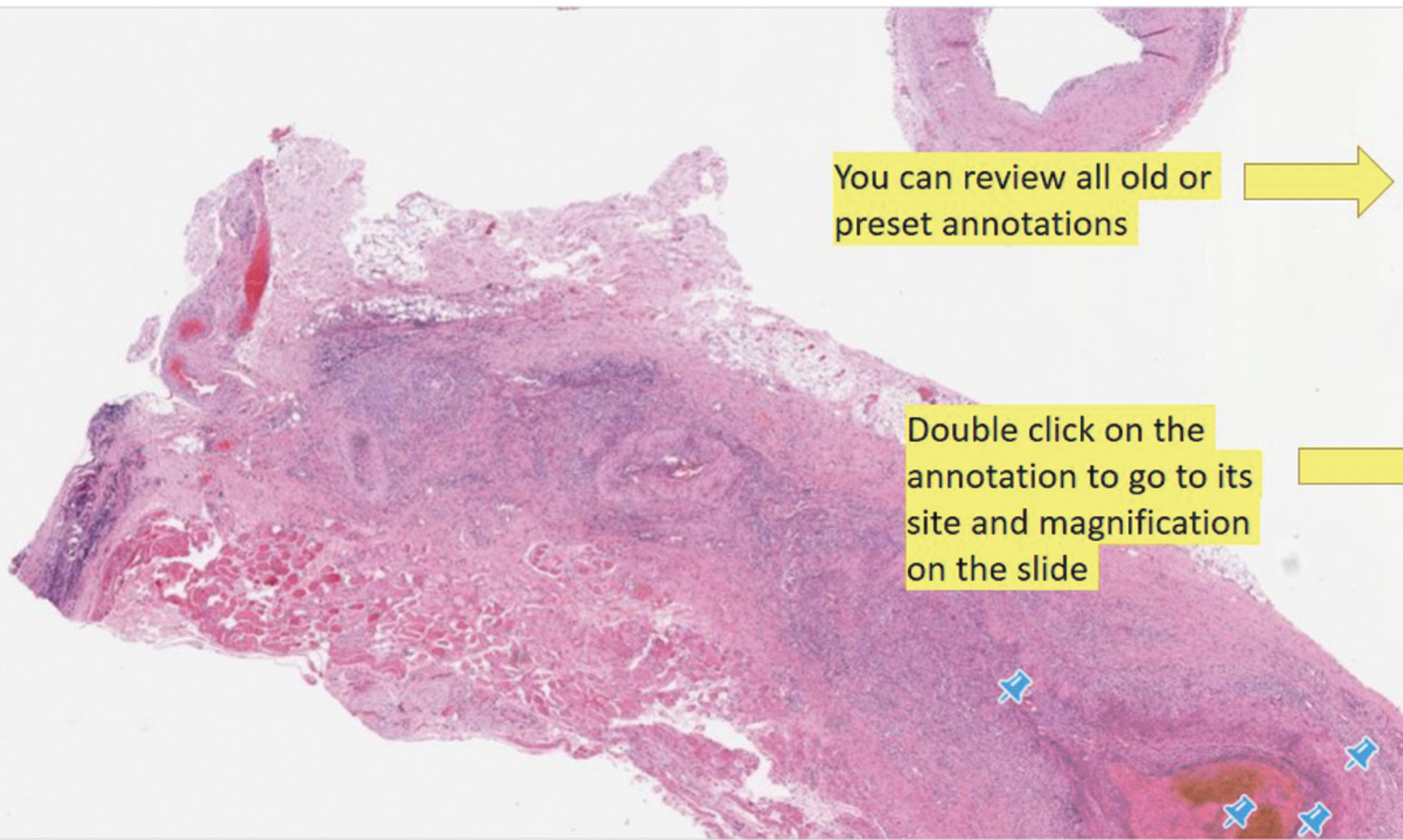




# 3- Review/ edit and delete annotations



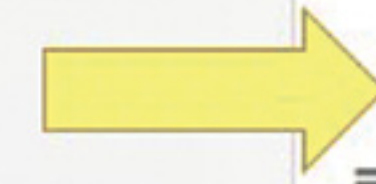




You can review all old or preset annotations



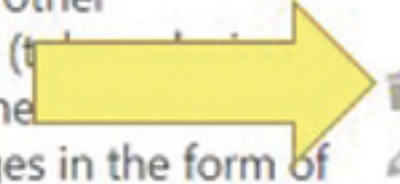
Double click on the annotation to go to its site and magnification on the slide



Annotations Add Annotation

**Granulomatous inflammation of the temporalis**  
Horton's disease (giant cell arteritis) is a granulomatous vasculitis. Like other inflammations (temporalis disease, rheumatoid arthritis), it is characterized by macrophages in the form of epithelioid cells and Langhans giant cells (thus 'giant cell arteritis'). The inflammation reacts very quickly to corticosteroids so that the granulomas disappear very shortly after the start of the treatment.

Delete old annotation



**Epithelioid cells**  
Epithelioid cells are macrophages which take a specific form: some strongly enlarge their cytoplasm and are thus called epithelioid cells because of their similarity to epithelial cells with their paralellally arranged nuclei. Activated macrophages can also fuse and form multinucleated giant cells.

Edit old annotation

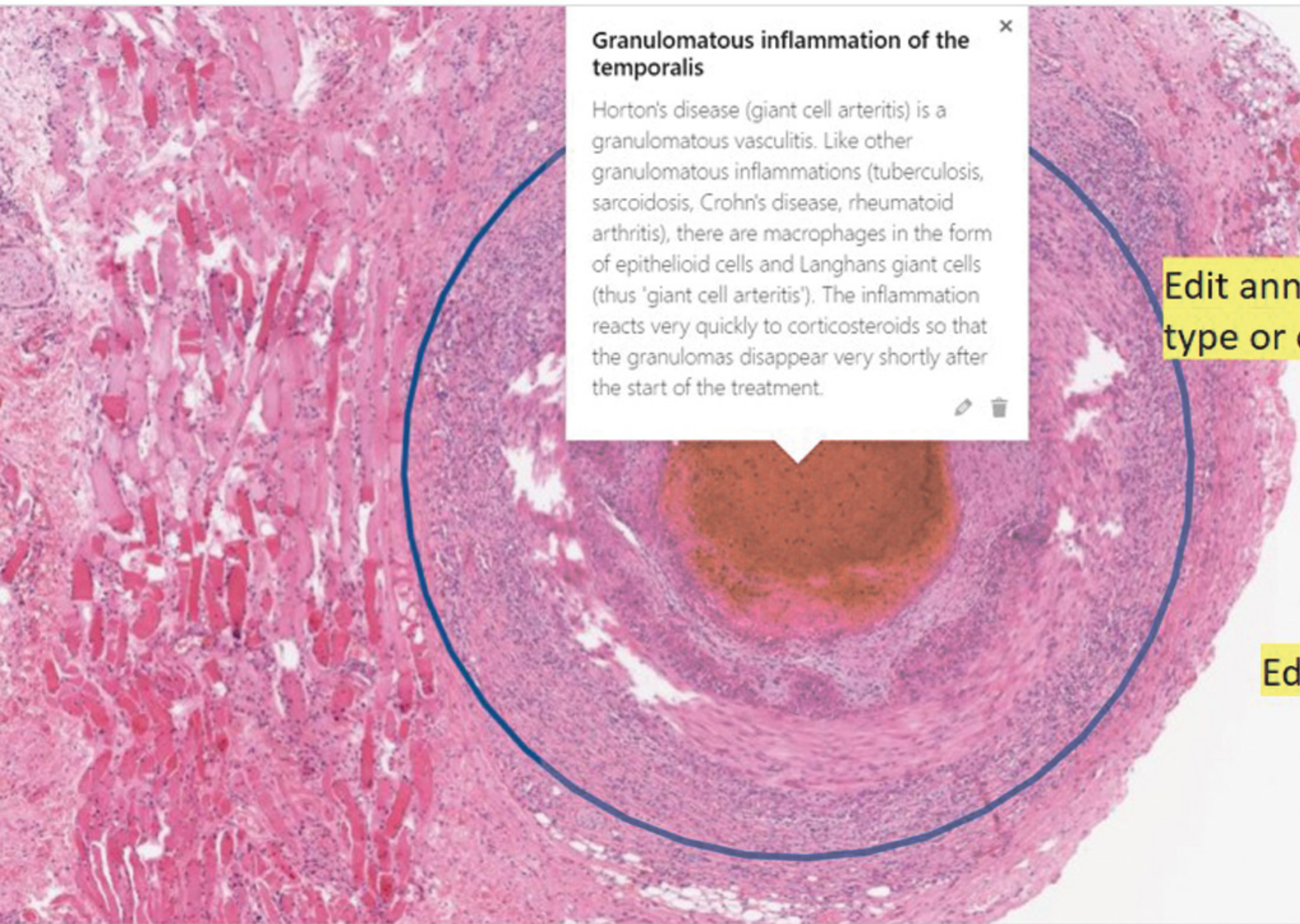
**Multi-nucleated Langhans**  
The multi nucleated giant cells (Langhans type) originate from fused epithelioid cells (macrophages). They are part of epithelioid cell granulomas. These are found for example in infectious diseases such as tuberculosis, leprosy, and in chronic inflammation e.g. Sarcoidosis, Crohn's disease, temporal arteritis, and rheumatoid arthritis. Characteristic is the

Download Annotations





# Annotate Image: Arteriitis temporalis



**Granulomatous inflammation of the temporalis**

Horton's disease (giant cell arteritis) is a granulomatous vasculitis. Like other granulomatous inflammations (tuberculosis, sarcoidosis, Crohn's disease, rheumatoid arthritis), there are macrophages in the form of epithelioid cells and Langhans giant cells (thus 'giant cell arteritis'). The inflammation reacts very quickly to corticosteroids so that the granulomas disappear very shortly after the start of the treatment.

Edit annotation type or color here

Edit text here

**Annotations** **Add Annotation**

Select Annotation-Type

Pin Arrow Circle **Polygon** Freehand

Select Annotation-Style


Type Annotation-Content

Granulomatous inflammation of the temporalis

Horton's disease (giant cell arteritis) is a granulomatous vasculitis. Like other granulomatous inflammations (tuberculosis, sarcoidosis, Crohn's disease, rheumatoid arthritis), there are macrophages in the form of epithelioid cells and Langhans giant cells (thus

Save Cancel

Download Annotations





# 4- Download all annotations





**Annotations** **Add Annotation**

**Granulomatous inflammation of the temporalis**  
 Horton's disease (giant cell arteritis) is a granulomatous vasculitis. Like other granulomatous inflammations (tuberculosis, sarcoidosis, Crohn's disease, rheumatoid arthritis), there are macrophages in the form of epithelioid cells and Langhans giant cells (thus 'giant cell arteritis'). The inflammation reacts very quickly to corticosteroids so that the granulomas disappear very shortly after the start of the treatment.

**Epithelioid cells**  
 Epithelioid cells are macrophages which take a specific form: some strongly enlarge their cytoplasm and are thus called epithelioid cells because of their similarity to epithelial cells with parallellally arranged nuclei. Activated macrophages can also fuse and form multi-nucleated giant cells.

**Multi-nucleated Langhans Giant Cells**  
 The multi nucleated giant cells (Langhans type) originate from fused epithelioid cells (macrophages). They are part of epithelioid cell granulomas. These are found for example in

**You can download all annotations from here**

Crohn's disease, temporal arteritis, and rheumatoid arthritis. Characteristic is the

[Download Annotations](#)

AutoSave  Off image-annotations.csv

File Home Insert Page Layout Formulas Data Review View Help

Cut Copy Paste Format Painter Clipboard Font Alignment

Calibri 11 A A B I U A

A1 id;title;content;geometry

	A	B	C	D	E	F	G	H	I
1	id;title;con	ent;geometry							
2	104252;Gr	sarcoidosi	Crohn's di	rheumato	there are	31190.535	31351.449	31467.178	31534.87
3	104237;E	pithelioid cells;	Epithelioid cells are macrophages which take a specific form: some stron						
4	104243;M	leprosy	and in chr	Crohn's di	temporal	and rheumatoid	arthritis. Characteristic is		
5	104240;T	hrombus of the Lumen;;	POINT(19707.3984375	-20859)					
6	104249;T	u it is highly inflamed. This inflammation often leads to thrombosis.;	POINT(20564.3984						
7	104246;T	u collagen and elastic fibers.;	POINT(21100.398437501	-20203)					
8									
9									
10									
11									
12									
13									

Local Disk (E:)

File name: image-annotations.csv

Save as type: Microsoft Excel Comma Separated Values File (\*.csv)

Hide Folders

Save Cancel





# 5- Add a new annotation

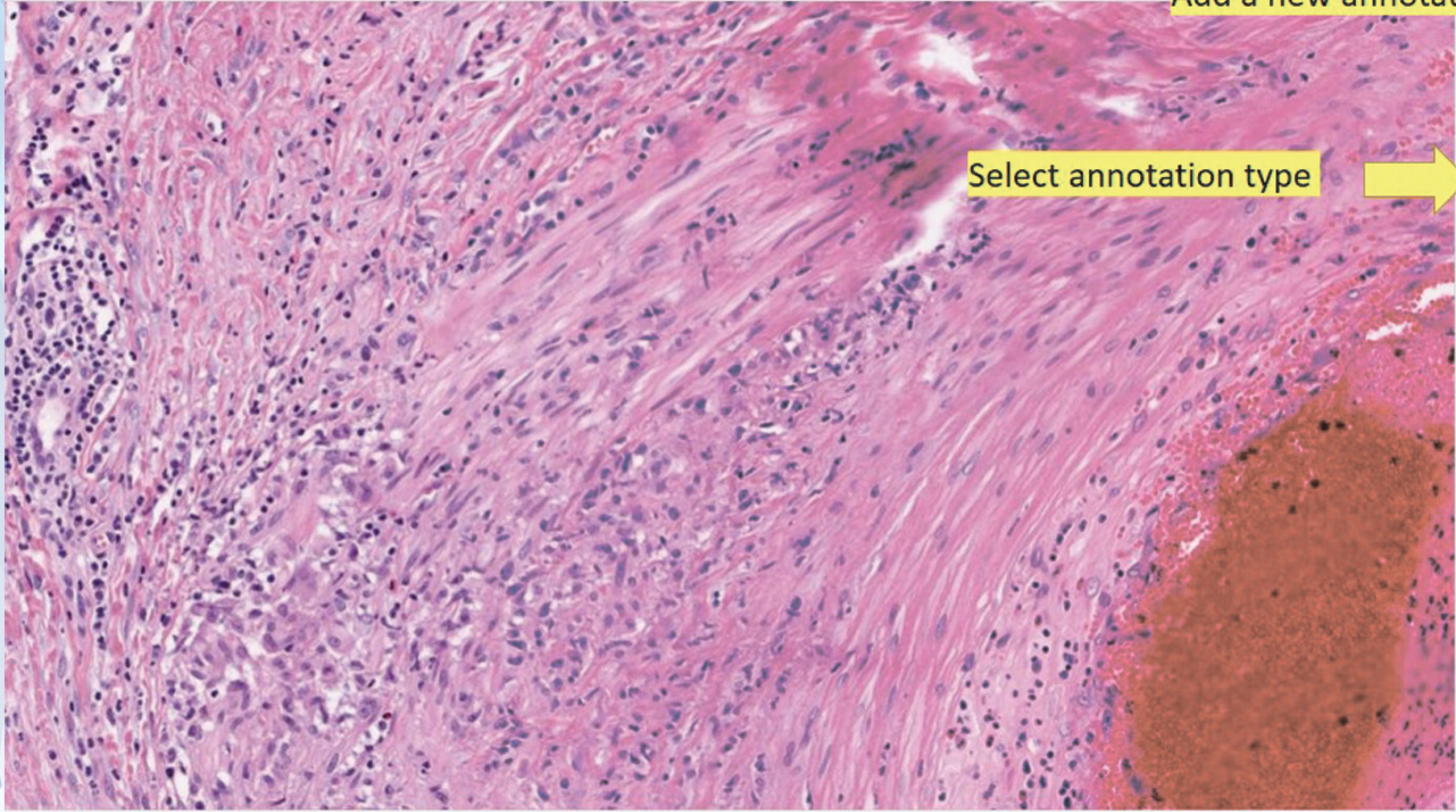




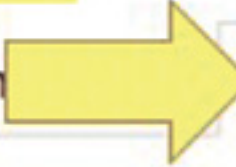
Annotate Image: Arteriitis temporalis



Add a new annotation from here



Select annotation type

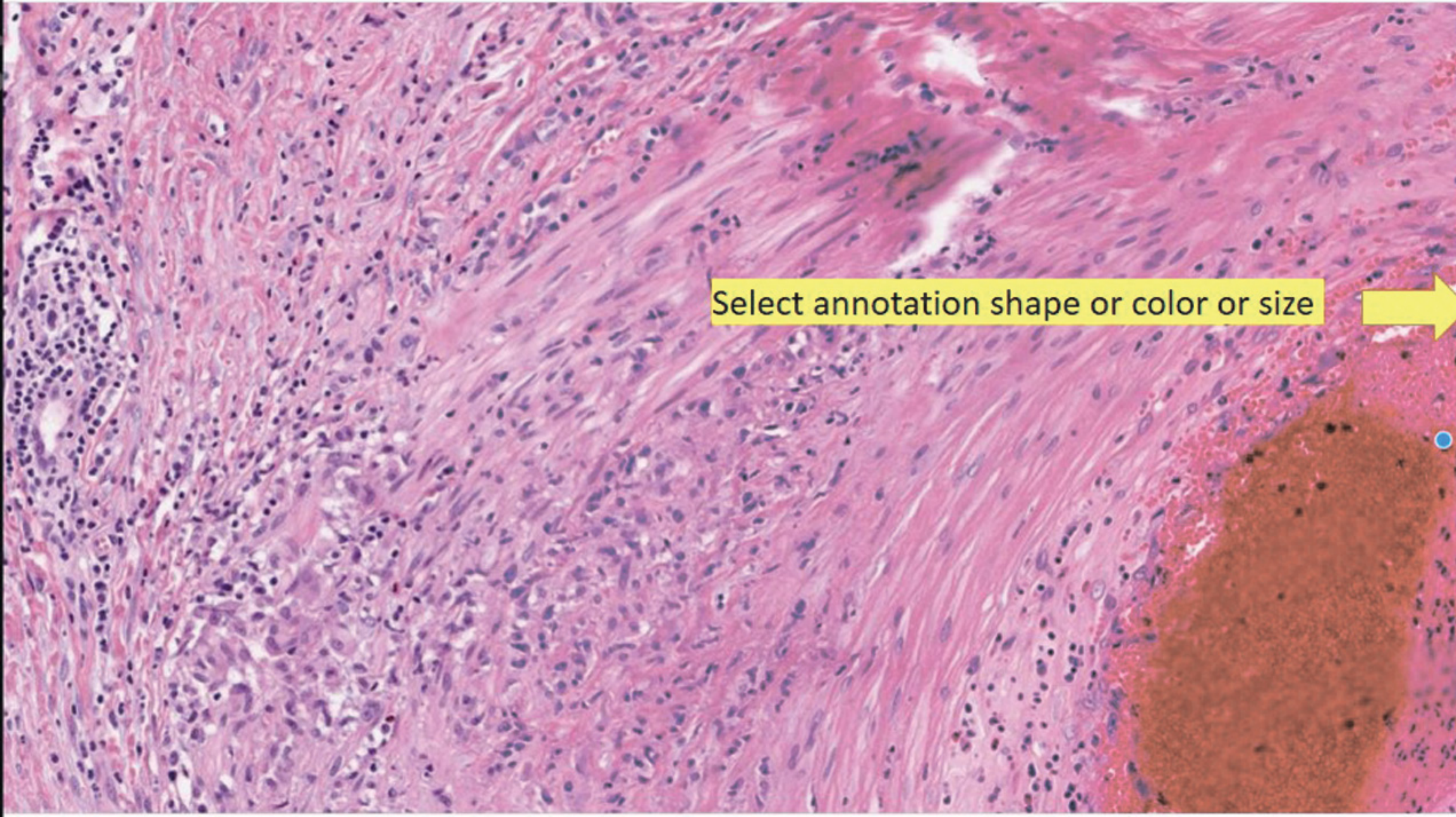
Annotation  Add Annotation

Select Annotation-Type

Download Annotations







Select annotation shape or color or size



Annotations    Add Annotation

Select Annotation-Type

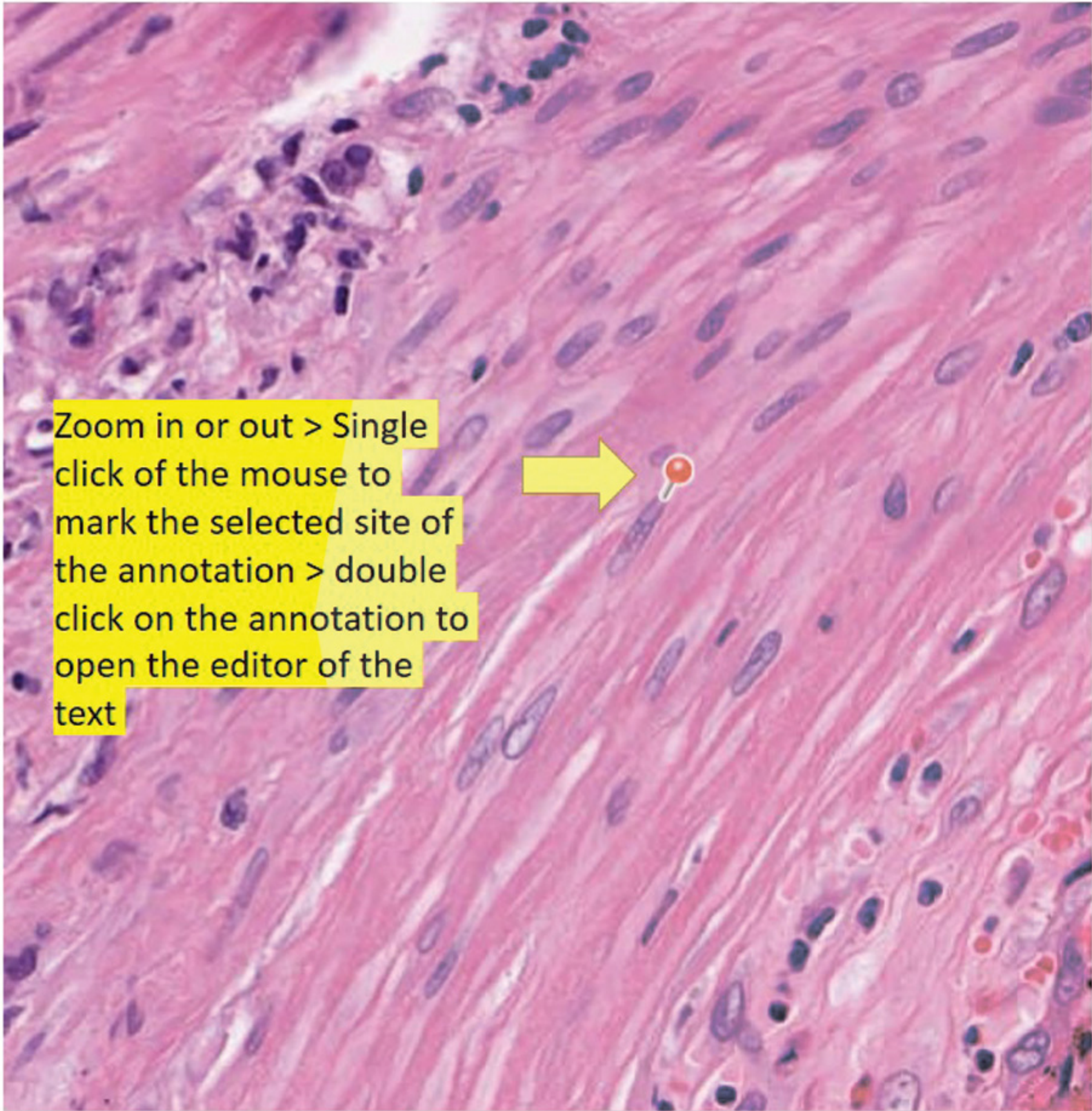
Pin   Arrow   Circle   Polygon   Freehand

Select Annotation-Style

Download Annotations







### Select Annotation-Type

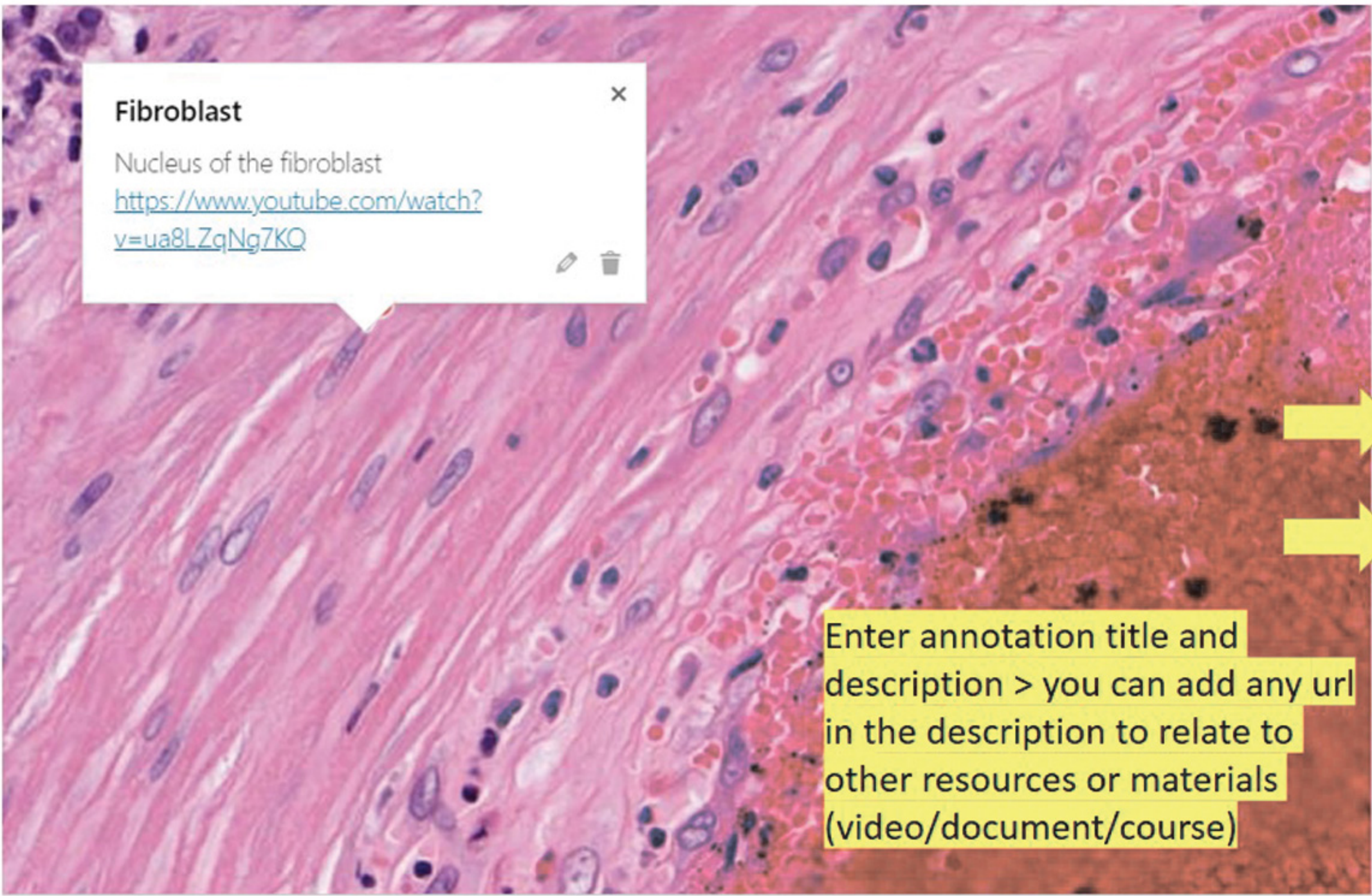
- Pin
- Arrow
- Circle
- Polygon
- Freehand

### Select Annotation-Style

- ↙
- ↘
- ✓
- 💬
- !
- 🚩
- 🚩
- 📌
- 📌
- 📍
- 📍
- 📍
- 📍
- 📍
- 📍







Pin | Arrow | Circle | Polygon | Freehand

Select Annotation-Style



Type Annotation-Content

Fibroblast

Nucleus of the fibroblast  
<https://www.youtube.com/watch?v=ua8LZqNg7KQ>

Save

Cancel

Must save entered annotation





### Slide-Manager

#### Course-Structure

- Biology
- Faculty of Agriculture
- Faculty of Dentistry
- Faculty of Education
- Faculty of Engineering
- Faculty of Medicine**
  - Human Anatomy
  - Hematology
  - Histology
  - Dermatopathology
  - Pathology**
    - Postgraduate Pathology
      - Path-PG-CVS**
        - Arteriitis temporalis**
        - False Aneurysm, prosthesis
        - False Aneurysm, prosthesis
        - Atherosclerosis. Aorta

Close the annotation window > refresh the slide manager > you will be able to see your added annotation in the slide viewer

#### Slide-Viewer: Arteriitis temporalis

**Fibroblast**  
Nucleus of the fibroblast  
<https://www.youtube.com/watch?v=ua8LZqNg7KQ>

Click here to share the slide





# 6- Get the share link or QR code





### Slide-Manager

#### Course-Structure

- Biology
- Faculty of Agriculture
- Faculty of Dentistry
- Faculty of Education
- Faculty of Engineering
- Faculty of Medicine**
  - Human Anatomy
  - Hematology
  - Histology
  - Dermatopathology
  - Pathology**
    - Postgraduate Pathology
      - Path-PG-CVS**
        - Arteriitis temporalis**
        - False Aneurysm, prosthesis
        - False Aneurysm, prosthesis
        - Atherosclerosis. Aorta

Close the annotation window > refresh the slide manager > you will be able to see your added annotation in the slide viewer

#### Slide-Viewer: Arteriitis temporalis

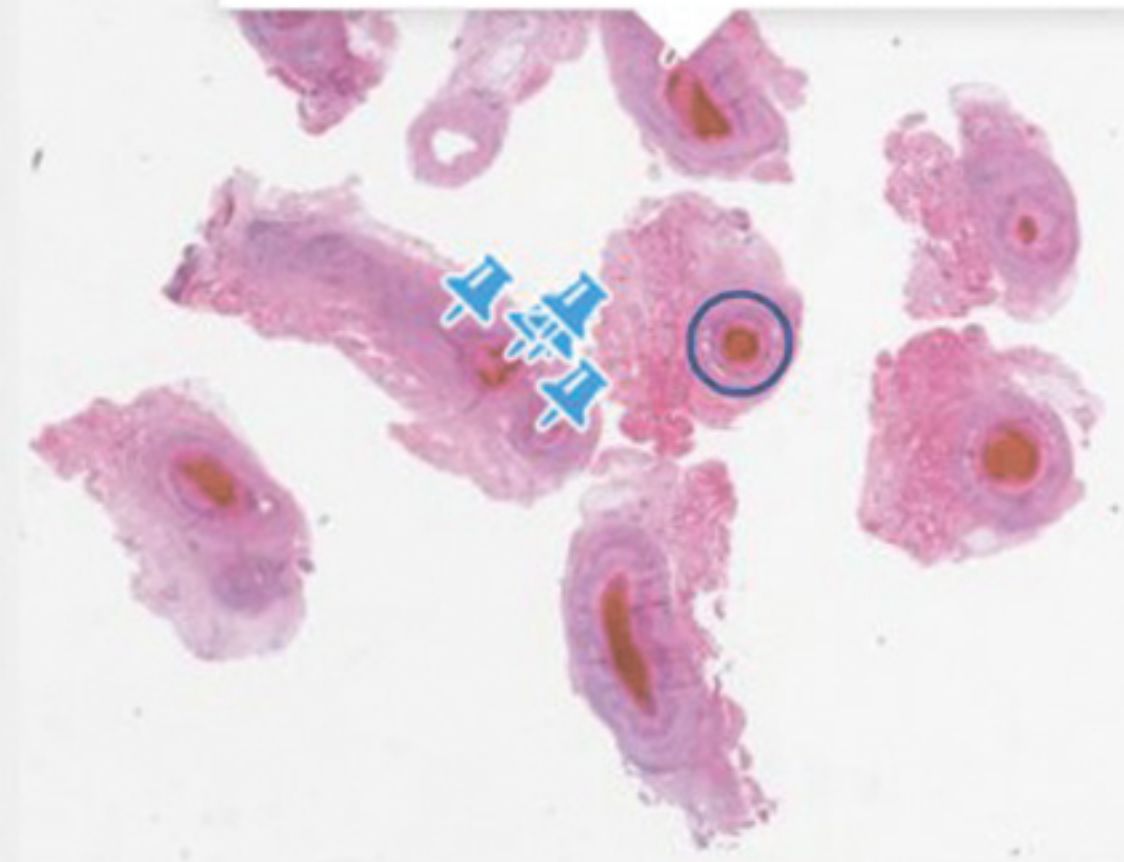
Annotate Image

Share image

**Fibroblast**

Nucleus of the fibroblast

<https://www.youtube.com/watch?v=ua8LZqNg7KQ>



Click here to share the slide



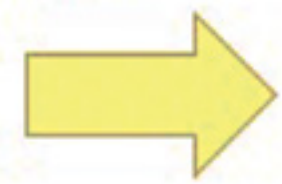


### Share image



Please select a sharing-mode: Share the slide with your current position & magnification or the whole slide.

Click here to extract the share link



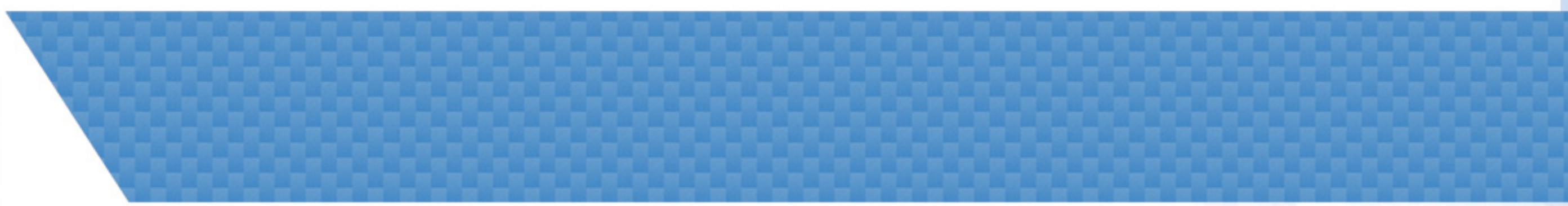
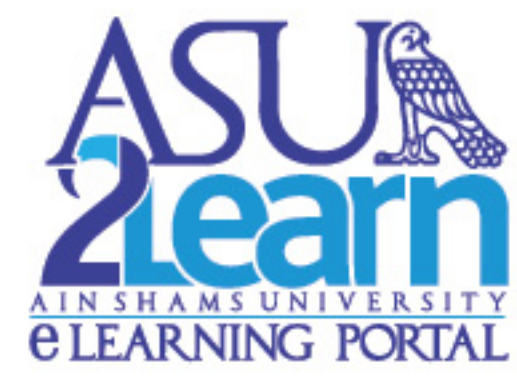
Share whole Slide

Share current View

Only registered users should be allowed to view the image.

Annotate Image

Share image

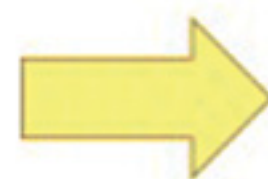




## Share image



Copy QR code  
to embed in a  
printed  
material



Copy URL to  
embed in LMS or  
any digital  
material



<https://ain-shams.smartzoom.com/share/c9541e2db697d279f20163112f1beee5aea>





# 7 - Share slide/image on your course LMS



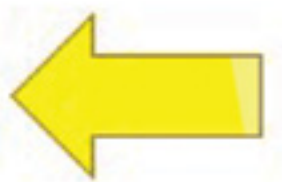




# PHYSICAL AND INORGANIC CHEMISTRY

Dashboard / Courses / PharmD / Level One / First Semester / PC 101

Turn editing on



Open your course on the faculty LMS > turn editing on

## Course Content

Course start date: 30/09/20 Category: First semester

Expand all

General

Options WEEK 1

## Site Navigation

> Dashboard







### Course Content

Course start date: 30/09/20 Category: First semester

▶ Expand all

General ^

WEEK 1 v

WEEK 2 v

WEEK 3 v

⊕ Edit v  
**Click on add activity or resource** → [+ Add an activity or resource](#)

WEEK 4 v

Options 5

#### Site Navigation

- > Dashboard





# ADD AN ACTIVITY OR RESOURCE

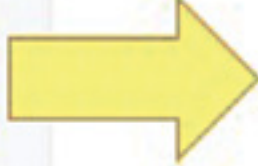


Search

All Activities Resources

 Assignment ☆ ⓘ	 Book ☆ ⓘ	 Chat ☆ ⓘ	 Choice ☆ ⓘ	 Database ☆ ⓘ	 External tool ☆ ⓘ
 Feedback ☆ ⓘ	 File ☆ ⓘ	 Folder ☆ ⓘ	 Forum ☆ ⓘ	 Glossary ☆ ⓘ	 H5P ☆ ⓘ
 IMS content package ☆ ⓘ	 Interactive Content ☆ ⓘ	 Label ☆ ⓘ	 Lesson ☆ ⓘ	 Page ☆ ⓘ	 Quiz ☆ ⓘ
 SCORM package ☆ ⓘ	 Survey ☆ ⓘ	 Turnitin Assignment 2 ☆ ⓘ	 URL ☆ ⓘ	 Wiki ☆ ⓘ	 Workshop ☆ ⓘ

Click on add URL



https://asu2learn.asu.edu/en/pharmacy/course/mod/nbn?id=152&add=wiki&section=3&sr=0







Share image

https://ain-shams.smartzoom.com/share/c9541e2db697d279f20163112f1bee5ae2

Virtual Slide

https://ain-shams.smartzoom.com/share/4048348d55696d8942e4

Choose a link...

Rich text editor toolbar with icons for bold, italic, list, link, and other formatting options.

view the microscopic slide here

- Automatic
- Embed
- Open
- In pop-up
- Automatic

Display URL description

Enter the slide name > copy paste the slide link > choose appearance (preferably pop up or new window) > save and return to course

- Preferences
- Log out
- Switch role to...

Appearance

Display







FACU

Ain Shams University - Google Chrome

ain-shams.smartzoom.com/share/4048348d55696d8942e4f2c39da109feb4e0b5e969b0188...

9/20 Category: First semester

Expand all

Edit

Edit

+ Add an activity or resource

### Course Content

General

WEEK 1

WEEK 2

WEEK 3



virtual slide

Appearance inside course

WEEK 4

WEEK 5





# 8- Features of the slide/ image viewer



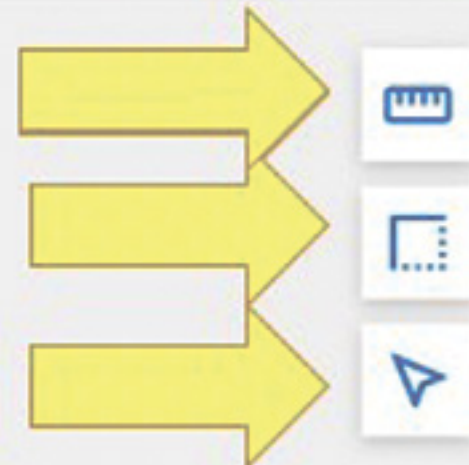


### Student viewer features (from the share link)

Measure length

Measure area

Change cursor shape



Show/Hide annotations on slide

Annotations Expert

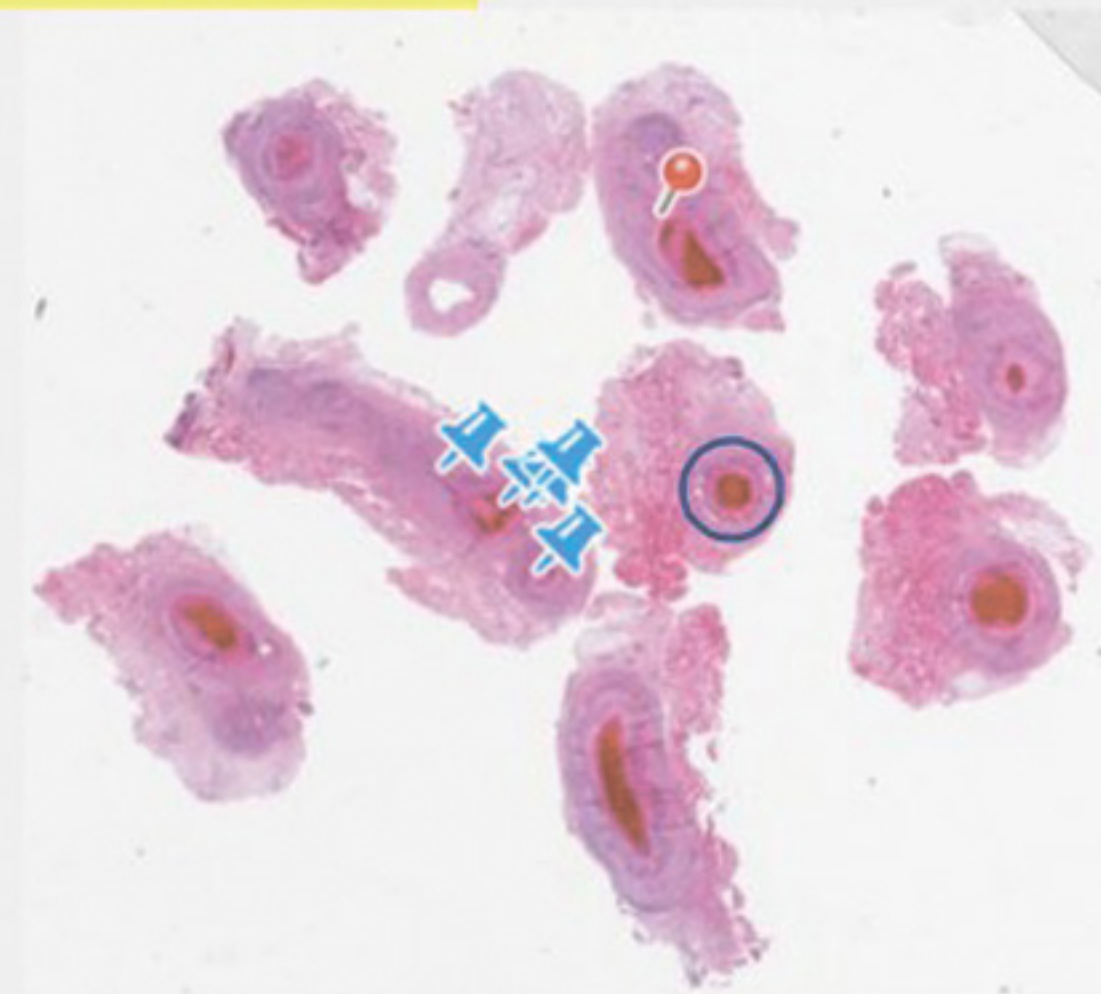
**Fibroblast**  
Nucleus of the fibroblast  
<https://www.youtube.com/watch?v=ua8LZqNg7KQ>

**Granulomatous inflammation of the temporalis**  
Horton's disease (giant cell arteritis) is a granulomatous...  
arthritides, such as...  
arthritides), there are macrophages in the form of epithelioid cells and Langhans giant cells (thus 'giant cell arteritis').  
...atic...  
...that the granuloma...  
...of the treatment.

**Epithelioid cells**  
Epithelioid cells are macrophages which take a specific form: some strongly enlarge their cytoplasm and are thus called epithelioid cells because of their similarity to...

View all annotations

View slide information



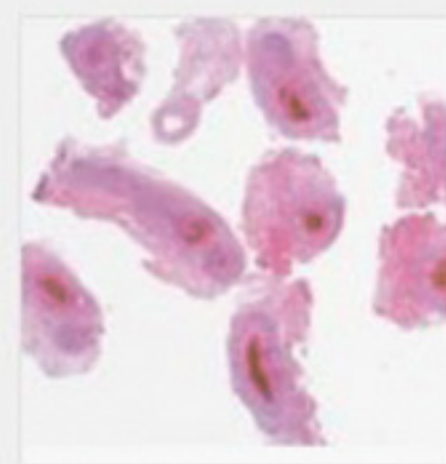
Zoom in/out or full screen

Rotate

Scale

5 mm

0.2x/20x





Click on any annotation to show the annotation box and the site with the magnification of the added annotation

Fibroblast  
Nucleus of the fibroblast

Any added link in the annotation can be opened

Wound healing in idiopathic pulmonary fibrosis (IPF)

5:22 mins · Nov 26, 2016

Boehringer Ingelheim Idiopathic Pulmonary Fibrosis

The pathophysiology of idiopathic pulmonary fibrosis, or IPF, is not fully understood.

2016, with communications

Comments are turned off. Learn more

50 µm 20x/20x

SmartZoom® Classroom Support Privacy Manage Cookies









# Thank you.

---

For any inquiries or technical support  
Please contact

**Dr. Dalia Yousef**

Director of the central eLearning unit  
WhatsApp no: 01001369875  
Email: [esa.elearning@asu.edu.eg](mailto:esa.elearning@asu.edu.eg)  
[Dalia\\_ahmed@med.asu.edu.eg](mailto:Dalia_ahmed@med.asu.edu.eg)

