

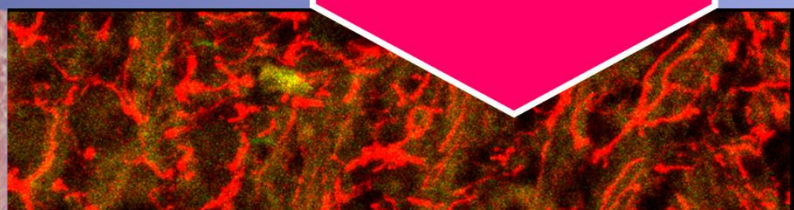
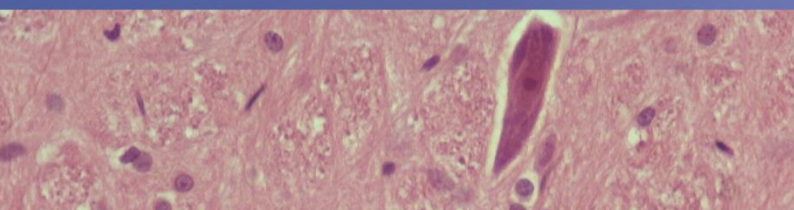


*2<sup>nd</sup> European Society of Pathology  
Academy*

18 – 21 June 2022  
Genval, Belgium

[www.esp-pathology.org](http://www.esp-pathology.org)

Final  
Programme



<b>INVITED SPEAKERS.....</b>	<b>6</b>
Janina Kulka.....	6
Anna Batistatou .....	6
Xavier Matias-Guiu .....	7
Andres Cervantes.....	7
Aleš Ryška .....	8
Fátima Carneiro.....	8
Dina Tiniakos.....	9
Holger Moch .....	9
Karel Smetana.....	10
Balázs Gyórfy .....	10
Áurelio Ariza .....	11
Irene Gullo.....	11
Arvydas Laurinavičius .....	12
Peter Schirmacher.....	12
Han van Krieken.....	13
Giuseppe Viale .....	13
Valerie Paradis .....	14
Sigurd Lax .....	14
Kurt Zatloukal .....	15
Maria Rosaria Raspollini .....	15



The **European Society of Pathology Academy (ESPA) 2022, Genval, Belgium, 18/06/2022- 21/06/2022** has been accredited by the European Accreditation Council for Continuing Medical Education (EACCME®) with **17** European CME credits (ECMEC®s). Each medical specialist should claim only those hours of credit that he/she actually spent in the educational activity. Through an agreement between the Union Européenne des Médecins Spécialistes and the American Medical Association, physicians may convert EACCME® credits to an equivalent number of *AMA PRA Category 1 Credits*. Information on the process to convert EACCME® credit to AMA credit can be found at [www.ama-assn.org/education/earn-credit-participation-international-activities](http://www.ama-assn.org/education/earn-credit-participation-international-activities).

Live educational activities, occurring outside of Canada, recognised by the UEMS-EACCME® for ECMEC®s are deemed to be Accredited Group Learning Activities (Section 1) as defined by the Maintenance of Certification Program of the Royal College of Physicians and Surgeons of Canada.



## ESPA 2022 Organising/Scientific Committee

Name	Country
Aleš Ryška	Czech Republic
Peter Schirmacher	Germany
Janina Kulka	Hungary
Raed Al Dieri	Belgium
Xavier Matias-Guiu	Spain
Christos Poullos	Belgium

## ESPA 2022 Awardees

Name	Country
Anna Keogh	Ireland
Aurélie Sannier	France
Balazs Acs	Sweden
Charlotte Vestrup Rift	Denmark
Daniel Gomes Pinto	Portugal
Diana Enea	Romania
Diana Gonciar	Romania
Eva Gravesen	Denmark
Ezgi Dicle Serbes	Turkey
Francesca Maria Bosisio	Belgium
Irena Ungureanu	France
Konstantin Bräutigam	Switzerland
Kristijan Skok	Austria
Krzysztof Szymoński	Poland
Maja Životić	Serbia
Monika Madrova	UK
Nir Pillar	Israel
Radu Pirlog	Romania
Ruo Yu Shi	Singapore
Selim Komina	North Macedonia
Sònia Gatus Calderó	Spain
Troy Noordenbos	Netherlands

Saturday 18.06				Sunday 19.06			
Arrival & Registration				7:00 - 8:30		Breakfast	
				Peter Schirmacher (DE)/ Christos Poullos (BE)	8:30-9:00	How to do meaningful research with limited resources? Aleš Ryška (Czech Republic)	
					9:00-9:30	Development of virtual staining algorithms Nir Pilar (Israel)	
						Experimental evaluation of heart regeneration mediated by nanoparticles Diana Gonciar (Romania)	
					9:30-10:00	Morpho-molecular Classification of Tumours Fatima Carneiro (Portugal)	
					10:00-10:30	The importance of mentoring Dina Tiniakos (Greece/United Kingdom)	
				10:30 - 11:00		Coffee break	
				Aleš Ryška (CZ) / Janina Kulka (HU)	11:00-12:00	Automatic detection of MMR-deficient crypts by artificial intelligence: a helpful tool for the diagnosis of Lynch syndrome Diana Enea (Romania)  Analysis of ANXA1 and LGR5 expression in CRC patients using a combination of multiplexed fluorescent in situ hybridization methods Konstantin Bräutigam (Switzerland)	
						Translational Research, what does it mean? Holger Moch (Switzerland)	
					12:00-13:00	Keynote: Tumor-stroma crosstalk/tumor plasticity Karel Smetana (Czech Republic)	
13:00 - 14:30				13:00 - 14:30		Lunch with Faculty	
Aurelio Ariza (ES)/ Anna Batistatou (GR)	14:30-15:30	Orientation lecture and presentation of learning objectives: Organising/Scientific Committee		14:30-15:00	Bioinformatics in Medical Research Balázs Györfy (Hungary)		
		Don't give up if you believe in your research Janina Kulka (Hungary)			Transplant immunology and dysimmune nephropathies Aurélie Sannier (France)		
	16:00-16:30	Nuclear markers for the diagnosis of histiocytosis Irena Ungureanu (France)		15:00-16:00	Nationwide Study on C3 glomerulopathy Eva Gravesen (Denmark)		
		Tumor microenvironment and the survival of special anatomical subtypes of diffuse large B-cell lymphoma Troy Noordenbos (The Netherlands)			RED Sign: Renal diseases signalling pathways in human and experimental interstitial fibrosis with and without systemic arterial hypertension: the role of signalling through NCAM & FGFR receptors Maja Životić (Serbia)		
				16:00-16:30	Ethical challenges posed by pathology research: An overview Áurelio Ariza (Spain)		
16:30 - 17:00				16:30 - 17:00		Coffee break	
Maria-Rosaria Raspollini (IT)/ Karel Smetana (CZ)	17:00-17:30	Combining teaching, diagnosis and research in pathology Anna Batistatou (Greece)		17:00-17:30	How ESPA 2018 has helped my career advancement Irene Gullo (Portugal)		
		AHNAK2 expression in urine samples from patients being monitored for Bladder Cancer Selim Komina (North Macedonia)			Increasing the available tools for improved prognosis estimate and immunotherapy prediction for melanoma patients Francesca Maria Bosisio (Belgium)		
	17:30-18:00	Homologous recombination deficiency in high grade endometrial cancers Sònia Gatiús Calderó (Spain)		17:30-18:30	Integrating transcriptomics data in the histopathological diagnosis of non-small cell lung cancer using convolutional neural network algorithms Radu Pirlog (Romania)		
		Interdisciplinary approach in pathology research: working with basic scientists and clinicians Xavier Matias-Guiu (Spain)			Whole genome transcriptome analysis in sclerosing pneumocytoma Ezgi Dicle Serbes (Turkey)		
	18:00-18:30			18:30-19:00	Investigating USO1 in Lung Cancer Anna Keogh (Ireland)		
		Clinical trials: the oncologist's perspective Andres Cervantes (Spain)			Meet the Expert: Organising/Scientific Committee		
20:00 - 22:30				20:00 - 22:30		Dinner with Faculty	



Monday 20.06				Tuesday 21.06			
7:00 - 8:30				7:00 - 8:30			
Breakfast				Breakfast & Check-out			
Aleš Ryška (CZ) / Xavier-Matias Guiu (ES)	8:30-9:00	Digital and Computational Pathology: Enabling Pathologists Arvydas Laurinavičius (Lithuania)		Peter Schirmacher (GE) / Xavier Matias-Guiu (ES)	8:30-9:00	Advances in tissue based imaging technology Valérie Paradis (France)	
	9:00-10:00	Machine learning techniques on samples of patients with breast cancer Daniel Gomes Pinto (Portugal)			9:00-9:30	Pancreatic cancer – biomarker identification, artificial intelligence, and prediction of treatment response by organoids Charlotte Vestrup Rift (Denmark)	
		Artificial Intelligence to Improve Diagnostics and Prognostication in Breast Cancer Balazs Acs (Sweden)				Novels in Pancreatic Cancer Pathology Krzysztof Szymoński (Poland)	
			Deep profiling of LSD1 and HIF-1α related genes as a prognostic and predictive panel in Asian triple negative breast cancers in the era of cancer immunotherapy Ruo Yu Shi (Singapore)		9:30-10:00	Medical writing and publishing Sigurd Lax (Austria)	
	10:00-10:30	Grant writing and scientific funding Peter Schirmacher (Germany)			10:00-10:30	Meet the Expert: Organising/Scientific Committee	
10:30 - 11:00				10:30 -11:00			
Coffee break				Coffee break			
Janina Kulka (HU) / Maria-Rosaria Raspollini (IT)	11:00-11:30	Impact of HER2 diagnostic criteria on breast cancer treatment Kristijan Skok (Austria)		Raed Al Dieri (BE) / Aleš Ryška (CZ)	11:00-11:30	Biobanking as Research platform in Pathology Kurt Zatloukal (Austria)	
		Histone Negative Giant Cell Tumours of Bone Monika Madrova (UK)			11:30-12:00	What does ESP has to offer to young pathologists Aleš Ryška (Czech Republic) & Maria Rosaria Raspollini (Italy)	
	11:30-12:00	Leadership skills for pathologists Han van Krieken (The Netherlands)				12:00-13:00	Evaluation, feedback discussion and concluding remarks (Faculty)
	12:00-13:00	Keynote: Consolidated and new tumour markers for targeted therapy of breast cancer Giuseppe Viale (Italy)					
13:00 - 14:30				13:00 - 13:30			
Lunch with Faculty				Light lunch & Departure			
Social activity and dinner with Faculty							

## Invited Speakers

### Janina Kulka

Professor Kulka has graduated in 1982 at the Semmelweis University, Budapest, Hungary. She has been working since then in the 2nd Department of Pathology of the same university. Between 1992-94 she was a research fellow in the Regional Breast Pathology Unit of the University of Bristol (UK). During the establishment of the national mammographic screening programme, she was member of the Professional Committee for breast cancer screening, of the „For a Healthy Nation” Programme in Hungary. Recently she took part in the development of two new ICCR Breast Cancer Datasets as member of the Development Committee. She is member of several Hungarian professional organisations and had been serving the Hungarian Society of Pathology as secretary (2005-2009) and president (2010-2012). She has been president of the IAP Hungarian Division from 2016 and she serves the European Society of Pathology as secretary since last year. Her research activity has been focused on breast cancer:



### Anna Batistatou

Anna Batistatou is a Pathologist with postgraduate studies: M.A. (1990), M.Phil. (1990) και Ph.D. (1993), Department of Pathology and Center for Neurobiology and Behavior, Columbia University, GSAS, NY, USA. She is Professor of Pathology, Director of the Department of Pathology and Head of Faculty of Medicine, School of Health Sciences, University of Ioannina, Greece. She has continuous diagnostic, teaching, and research activities. Her research interests focus on molecular pathogenesis of malignant neoplasms and the study of prognostic and predictive markers, mainly on tissues from patients with neoplasia. She has 230 international publications (*pubmed*), with 4330 citations and h-index:34 (*Scopus*). She is member of the ESP Education Subcommittee. She is also author of a literary book entitled «Life in stone», Ed. *FAGOTTOBOOKS*, 2016.





### Xavier Matias-Guiu

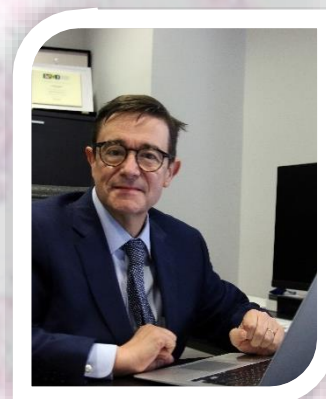
Xavier Matias-Guiu, M.D., Ph.D. is Professor of Pathology at the University of Barcelona (2019-) and Lleida (2002-), and chairman of Pathology in Hospital Universitari de Bellvitge, Barcelona (2015-), and Hospital Universitari Arnau de Vilanova, Lleida (2002-). Research is focused on clinicopathologic features and molecular genetics of gynaecological cancer. Past-President, Sociedad Española de Anatomía Patológica (2019-21); Member of the Council (2015-19) and chairman of the Education subcommittee of European Society of Pathology (2021-). Member of the Executive committee (2009-2013), and President (2021-23) of the International Society of Gynecologic Pathologists (ISGYP); Member, and Editor in the WHO Classifications of Tumours of the Female Genital Tract, (2014 and 2020), team member in the ESMO-ESGO-ESTRO Consensus Conference on Endometrial carcinoma (EC) (2016), and the ISGYP guidelines on EC (2019), co-chairman in the ESGO/ESTRO/ESP guidelines for the management of patients with EC (2020), chairman in the ICCR Dataset for the reporting of EC (2021), member of the FIGO Endometrial Cancer Staging Subcommittee (2021-), and co-chairman in the ESMO-ESGO-ESP guidelines on Ovarian Cancer (2021-2022).



### Andres Cervantes

Professor Andrés Cervantes is head of the Medical Oncology Department at the University Hospital in Valencia. His main areas of research are gastrointestinal malignancies and new drug development. Dr Cervantes is Professor of Medicine at the University of Valencia and since May 2017 he is the General and Scientific Director of the Institute of Health Research - INCLIVA.

He has been director of Education at ESMO, European Society of Medical Oncology, (society of oncologists with almost 24,000 members worldwide) and associate editor of the Annals of Oncology, the European medical Journal with the highest impact on oncology. He is currently President Elect of ESMO





### Aleš Ryška

Professor Aleš Ryška Graduated at the Charles University, Medical Faculty in Hradec Králové, Czech Republic (MD - 1994), Ph.D. in pathology (2001), board certification in pathology (2000). Working at The Fingerland Department of Pathology, Charles University Medical Faculty in Hradec Králové, Czech Republic (full Professor of Pathology - 2007). Currently chair of the department. Member of several scientific societies and editorial boards. President of European Society of Pathology from 2021. Chair of the Local Organizing Committee of the 24th European Congress of Pathology in Prague (2012) and of the Local Organizing Committee of the 5th Pannonia Congress of Pathology (2018).



Interested namely in diagnostics of lesions of the breast, thyroid and salivary glands - cytology, histology and special methods, such as immunohistochemistry, molecular biology, etc. as well as in predictive pathology (detection of markers predicting response to targeted therapy) and quality control in pathology. Author of 200 peer-reviewed papers and multiple book chapters.

### Fátima Carneiro

Fátima Carneiro is Professor of Pathology (Faculty of Medicine of the University of Porto), Head of the Service of Anatomic Pathology (Centro Hospitalar Universitário São João) and Senior Researcher at Ipatimup/i3S. She was President of the European Society of Pathology (2011-2013) and President of the Portuguese Academy of Medicine (2017-2020). She was awarded by the Portuguese Foundation for Science and Technology "for an outstanding curriculum vitae" (2005) and received the Order of "Infante D. Henrique" (Grand Officer) awarded by the President of Republic "for outstanding services to science" (2006). She was nominated as "The most influential pathologist in the world" in 2018 (by "The Pathologist"). She is (co)author of more than 400 peer-reviewed publications (h index: 74; Scopus, accessed on April 21, 2022) and 26 book chapters, including books issued by the IARC and the UICC. She was co-editor of the WHO Blue Book on "Tumours of the Digestive System" (4th edition) and standing member of the Editorial Board of the WHO Classification of Tumours series (5th edition) (2018–2020). Her research focuses on the etiopathogenesis and molecular pathology of gastric cancer





## Dina Tiniakos

Dina Tiniakos is Professor of Pathology & Director, Dept of Pathology, Aretaieion Hospital, Medical School, National & Kapodistrian University of Athens, Greece and academic hepatopathologist at the Translational and Clinical Research Institute, Faculty of Medical Sciences, Newcastle University, UK. She is Past President of the European Society of Pathology (2019-2021) and Chair, Equality & Diversity Taskforce, United European Gastroenterology. Her main research interests include fatty and autoimmune liver disease and hepatocarcinogenesis and co-leads several European consortia on liver pathology. She is also central pathologist in major international clinical trials for non-alcoholic steatohepatitis. She is currently Associate Editor of "Histopathology" and Editorial Board member of "Journal of Hepatology" and "Annals of Gastroenterology".



## Holger Moch

Holger Moch graduated from Humboldt University Berlin (Charité), Germany. He obtained postgraduate qualifications at the University Hospital Basel, Switzerland and is board certified in Pathology and in Molecular Pathology. Currently, Holger Moch is Professor of Pathology at the University Zurich and Chairman of the Department of Pathology and Molecular Pathology, University Hospital Zurich, Switzerland. Since 2016, he is associate member of the Department of Biology at the Swiss Federal Institute of Technology (ETH). Dr Moch developed a robust translational research program to understand the molecular background of urogenital tumours. His work is described in more than 500 peer-reviewed papers. He edited the 2016 World Health Organization Classification of Tumours of the Urinary System and Male Genital Organs "WHO blue book" and is now an editorial board standing member of the WHO Classification of Tumours (5th Edition). He is member of the German National Academy of Science Leopoldina, the Swiss Academy of Medical Sciences and Past President of the European Society of Pathology.





### Karel Smetana

Professor Karel Smetana, Jr., MD. DSc. graduated general medicine from the 1st Faculty of Medicine, Charles University, Prague in 1983. As emeritus head of the Institute of Anatomy, 1st Faculty of Medicine, Charles University, Prague, and group leader in the Biotechnological and Biomedicine Centre of the Czech Academy of Sciences and the Charles University he is interested in cell biology, predominantly focused on cancer-associated fibroblasts and their role in the cancer microenvironment. He is the author of more than 240 scientific articles and 11 patents. He is a member of the editorial boards of many journals. He received the National Scientific Award of the Government of the Czech Republic and the Award of the Ministry of Education, Youth and Sports of the Czech Republic.



### Balázs Györffy

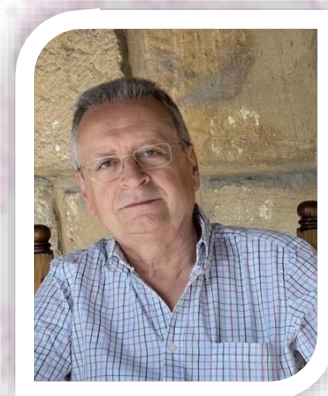
Balazs Györffy MD PhD is the head of the Department of Bioinformatics at Semmelweis University. He studied medicine at the Semmelweis University Budapest and at the Ruprecht-Karls University of Heidelberg, Germany. He published over 250 scientific papers, submitted several patents and obtained doctoral degree in molecular genetics and bioinformatics. He worked several years at the Charité Universitätsmedizin Berlin, Germany and at the Harvard Medical School, Boston, USA. He is a specialist of bioinformatical evaluation of genomic data and his current research interest is in uncovering new cancer biomarkers.





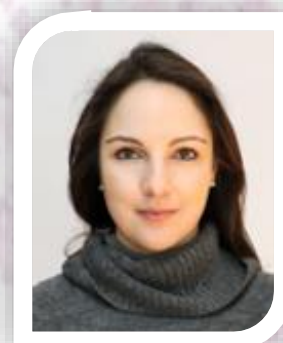
### Áurelio Ariza

Aurelio Ariza is professor of Pathology at the Autonomous University of Barcelona (UAB). He obtained his MD degree at the University of Sevilla. After pursuing his anatomic pathology residency training at the Yale-affiliated Hospital of St Raphael, New Haven, Connecticut, he completed his training with a neuropathology fellowship and a surgical pathology fellowship at the Yale-New Haven Hospital (Yale University). He has been attending pathologist, then chair and finally senior consultant of the Department of Pathology, Hospital Universitari Germans Trias i Pujol (HUGTP), Badalona, Barcelona. He has also served as HUGTP research coordinator, research vice dean of the UAB Medical School, president of the Spanish Society of Pathology (SEAP), member of the ESP Council, editor of the ESP Newsletter, secretary of the ESP, Spanish representative to the UEMS Section of Pathology, and president of the National Commission for Anatomic Pathology of the Spanish Ministry of Health. Additionally, he has received the Professional Excellence Award of the Barcelona Medical College, been appointed member of the Royal Academy of Medicine of Catalonia and granted the SEAP Ramón y Cajal Award. He has been the principal investigator of several neuropathology and tumor pathology projects and has authored or co-authored over 140 peer-reviewed articles. The unveiling of p53 and JC virus interactions in progressive multifocal leukoencephalopathy has constituted one of his favourite research topics.



### Irene Gullo

After completing medical school in Italy in 2013 (100/100 cum laude and Medal for Academic Merit), Irene Gullo moved to the Faculty of Medicine of the University of Porto (Portugal) where she completed a PhD programme on Molecular and Oncology Medicine (2019), integrating prestigious research teams at the Faculty, focused on pathogenesis and molecular pathology of gastric carcinoma. She obtained the degree of Specialist in Anatomic Pathology a year later, having focused her expertise on digestive and molecular pathology. In 2019 she joined the International Gastric Cancer Linkage Consortium to participate in the updating of the Hereditary Diffuse Gastric Cancer clinical management guidelines. In 2019 she attended an observership on gastrointestinal, liver and Pancreatobiliary pathology at the Memorial Sloan Kettering Cancer Centre, as well at Johns Hopkins Hospital. She also collaborated, as invited visiting researcher, on ongoing research in Hereditary Diffuse Gastric Cancer at the National Institute of Health in Bethesda. She has published 40 papers in international peer reviewed indexed journals, with over 500 citations. She is a 2022 Giordano Fellow, for the field of Liver Pathology in Heidelberg. She was an ESPA 2018 awardee.





## Arvydas Laurinavičius

Arvydas Laurinavičius (M.D., Ph.D.) graduated from the Medical Faculty of Vilnius University (1981-1987), accomplished Ph.D. program at the Moscow Medical Academy (1989-1992), and Fellowship in Renal Pathology at the Brigham and Women's Hospital / Harvard Medical School (1996-1997). He is pathology professor at Vilnius University and serves as director of the National Centre of Pathology, affiliate of Vilnius University Hospital Santaros Klinikos. His research team focuses on computational pathology and AI solutions for prognostic disease modelling. He was a member of the Management Board of the SNOMED International (2007-2012) and has chaired its Research and Innovation Committee in 2007-2009.



## Peter Schirmacher

Professor Peter Schirmacher is director of the Institute of Pathology (IPH) of Heidelberg University (Germany) since 2004 and ESP President-Elect. He studied Medicine at Mainz University (Germany) and Molecular Biology at Albert Einstein College, New York, received training and board certification in Pathology and Molecular Pathology at Mainz University and was Professor of Pathology at Cologne University. He is board member of the National Centre of Tumor Diseases and Principal Investigator in many national and international consortia.

He is past Chairman of the German Society of Pathology, past Council Member and past Education Subcommittee Chair of ESP.

His scientific interest centres on liver and molecular pathology with specific emphasis on molecular pathogenesis of hepatobiliary cancer. IPH is an ESP-ATC for Liver and Molecular Pathology.





## Han van Krieken

Han van Krieken is a pathologist with special expertise in the fields of hemato-pathology and the pathology of the gastrointestinal tract. He was professor for tumor pathology since 1999 and has kept from 2004 – 2015 the chair of pathology and was head of the department of pathology at the Radboud University Nijmegen Medical Centre in Nijmegen. From 2009 on he was the chairman of the Radboud University Centre for Oncology, which evolved in 2015 the Radboudumc Centre for Oncology and had the 50% position as chairman until he became Rector Magnificus of the Radboud University in May 2016.

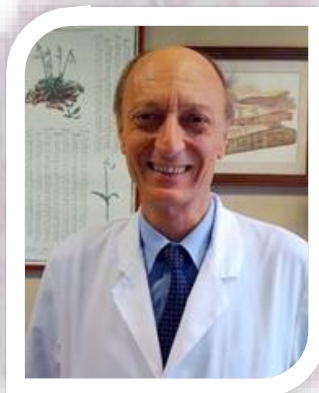
He was the treasurer / secretary of the European Association for Haematopathology (2000 – 2008; treasurer 2003-2011) and the President of ESP (2013 – 2015); Furthermore, he was the chairman of the working group for pathology of the digestive system of the ESP (2003 – 2007).

He is (co)author of more than 500 papers in peer reviewed journals, has written chapters in books on pathology and oncology, is chief editor of a Dutch Textbook on oncology and the Encyclopedia of Pathology and serves on the editorial board of the American Journal of Surgical Pathology, was managing editor of Virchows Archiv (2009 – 2015) and the Chief editor of the Journal of Hematopathology (2007 – 2017). Since 2011 he is member of the German Academy of Sciences Leopoldina and since 2014 member of the Academia Europaea and Honorary Fellow of the Royal College of Pathology.



## Giuseppe Viale

Giuseppe Viale is full Professor at the School of Medicine of the Milan University. He is Vice-President for Europe of the Senologic international Society since 1994, member of the translational research committee of the HERA trial since 2022, members of the scientific/translational research committee of the Breast International Group (BIG) since 2022, Co-Chairman of the central pathology office of the International Breast Cancer Study Group (IBCSG) since 2001 and member of the scientific committee of the scientific committee of IBCSG since 1997.



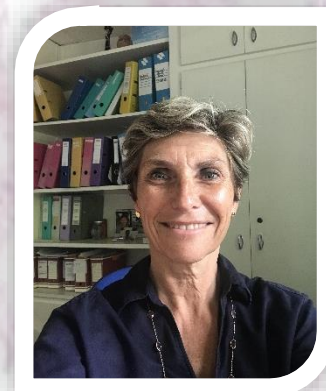


## Valerie Paradis

Valérie Paradis, MD PhD and Professor in Pathology, is the chairman of Pathology department (Beaujon hospital) and leader of the INSERM team "From inflammation to neoplasia in digestive diseases" (INSERM UMR 1149, Paris).

Fields of research include pathological and molecular aspects of chronic liver diseases and liver tumorigenesis with a specific interest in tumor heterogeneity. Her team has developed MALDI imaging for identification of tissue biomarkers, and ex vivo culture model using thin tissue slices & organoids.

She is coordinating a collaborative FHU project MOSAIC aiming to identify imaging signatures "Imagomics" through integration of radiological and histological features and Artificial intelligence. She is a member of international groups of liver pathologists, Scientific commissions Research Institutes (INSERM, ANRS). She contributed to WHO Classification of Digestive Tumors and Clinical Practice Guidelines (Benign liver tumors & Occupational Liver Diseases).



## Sigurd Lax

Study of Medicine (Graduation 1987) and Residency in Pathology (1987-93) University of Graz Erwin Schrödinger Research Fellowship (FWF), Johns Hopkins University, Baltimore, MD, USA (1995-1997) Habilitation for Pathology and Associate Professor (1999), Univ. of Graz Head, Department of Pathology, Hospital Graz II (2002 until date); Professor (2008)

Professor of Pathology, Johannes Kepler University Linz, School of Medicine (2019- until date) Honorary Visiting Professor, School of Medicine, University Maribor, Slovenia (2021). President Austrian Society of Pathology/Austrian IAP Division (2013-14), German IAP Division (2015-17). Vice President for Europe, IAP (since 2018).

Standing Member Editorial Board 5th edition WHO blue books (2018-2021).

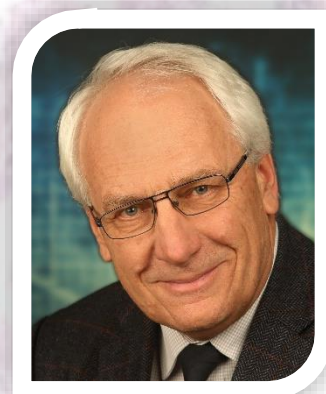
Associate Editor (2013-2018) and Senior Editorial Consultant (2019 to date) Virchows Archiv. Member of Editorial Boards: International Journal of Gynecological Pathology; Pathobiology; Der Pathologe; European Journal of Gynaecological Oncology; Acta medicobiotechnica





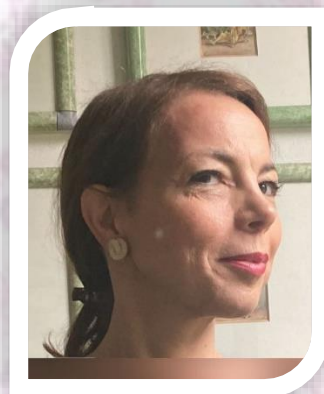
### Kurt Zatloukal

Prof. Kurt Zatloukal is full Professor of Pathology and Head of the Diagnostic and Research Centre for Molecular Biomedicine at the Medical University of Graz. His research focuses on biobanking and digital pathology, the development of molecular diagnostics as well as the molecular pathology of diseases. He coordinated the preparatory phase of the European biobanking and biomolecular research infrastructure (BBMRI-ERIC) and is director of the Austrian national node. He coordinates the Horizon 2020 PCP project INSTAND-NGS4P on next generation sequencing in medical diagnostics and is work package leader in the IMI project BIGPICTURE, with the aim of building a central repository for digital pathology. He is Austrian delegate in CEN and ISO Technical Committees for diagnostics standard development and member of the scientific board for genetic testing and human gene therapy at the Austrian Ministry of Health. He is a member of the Academia Europaea and has published over 239 scientific papers and was co-inventor of 26 patent applications.



### Maria Rosaria Raspollini

Maria Rosaria Raspollini is senior staff pathologist at the Department of Histopathology and Molecular Diagnostics at the University Hospital Careggi, Florence, Italy. She is professor and tutor in pathology at the post-graduate School of Urology, University of Florence, Medical School. She has graduated from the University of Florence Medical School, where she performed her residency training. Her main research themes are Uropathology and Gynaecopathology, biomarkers in oncology. She is editorial board member for the upcoming 5th Edition of Urinary and Male Genital Tumours of the WHO Classification. She is active member in multiple professional scientific organisations and participates in joined guideline committees. She is past Chair of the Gynaecopathology WG of ESP, past council member of ESP and current ESP Treasurer.



Contact Details  
European Society of Pathology  
Rue Bara 6  
1070 Brussels, Belgium  
[www.esp-pathology.org](http://www.esp-pathology.org)  
[admin@esp-pathology.org](mailto:admin@esp-pathology.org)

