

**4**

**L2026-4**

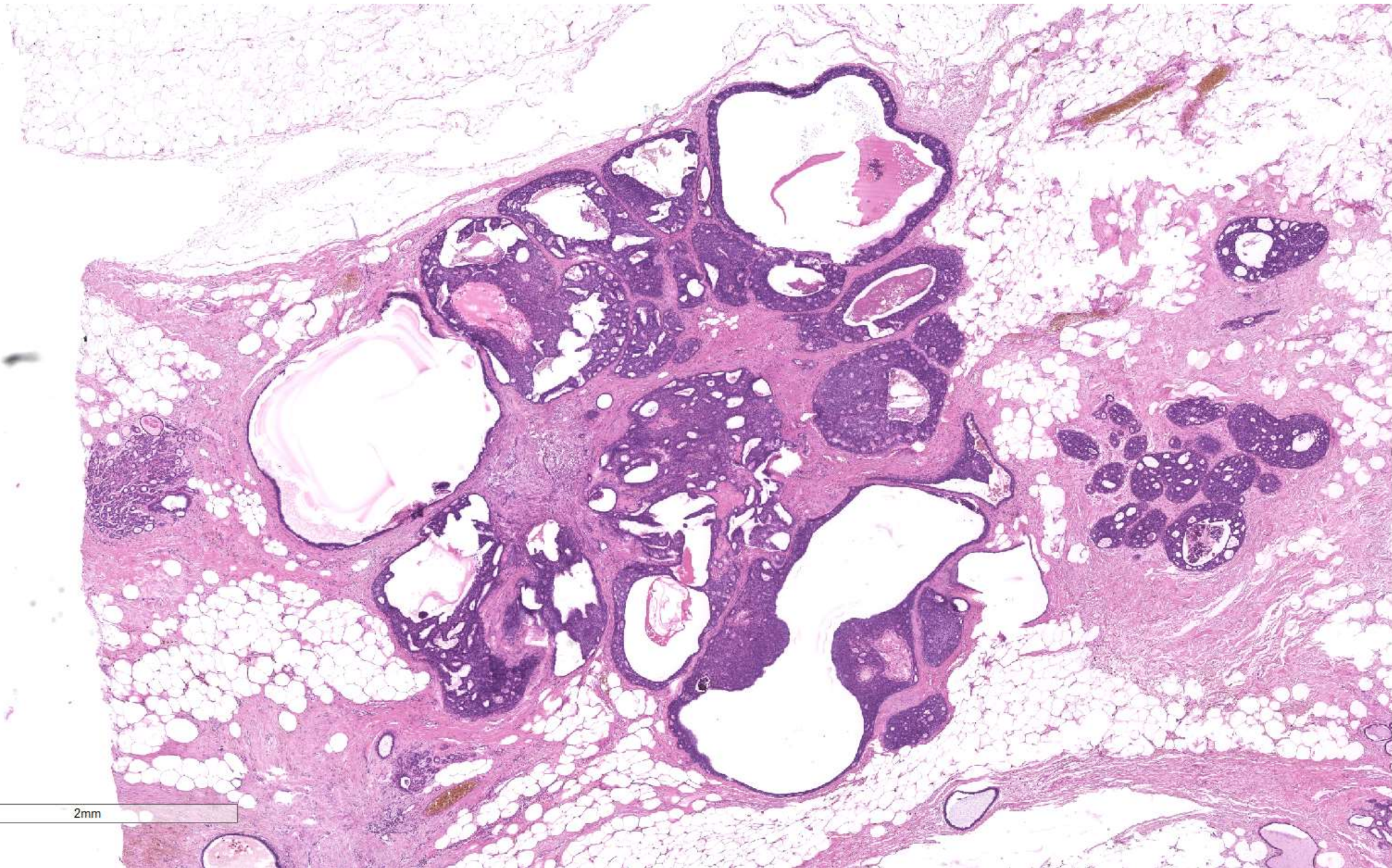
**Václav Stejskal**

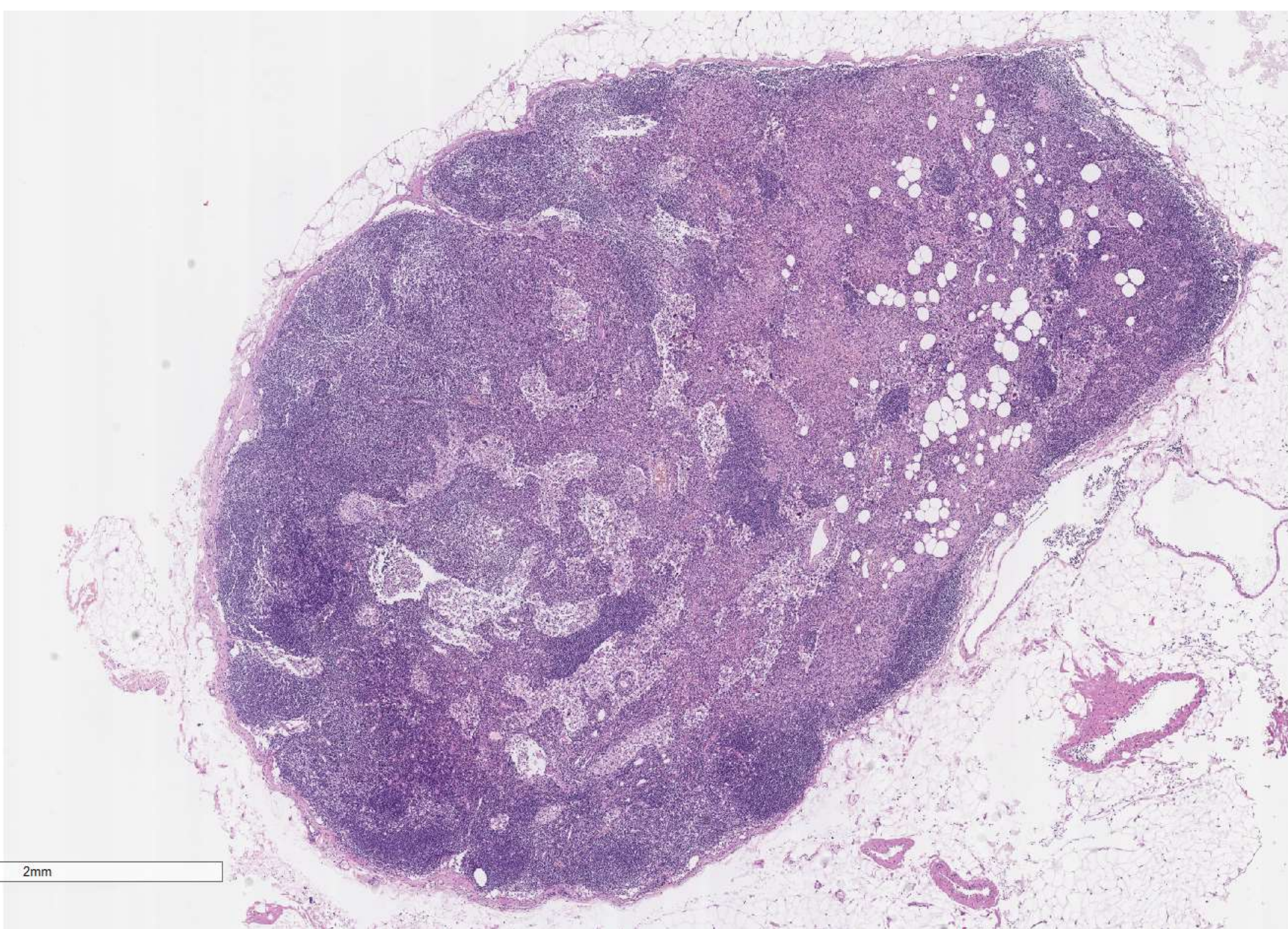
případ č.4

## **Klinické údaje a makropopis**

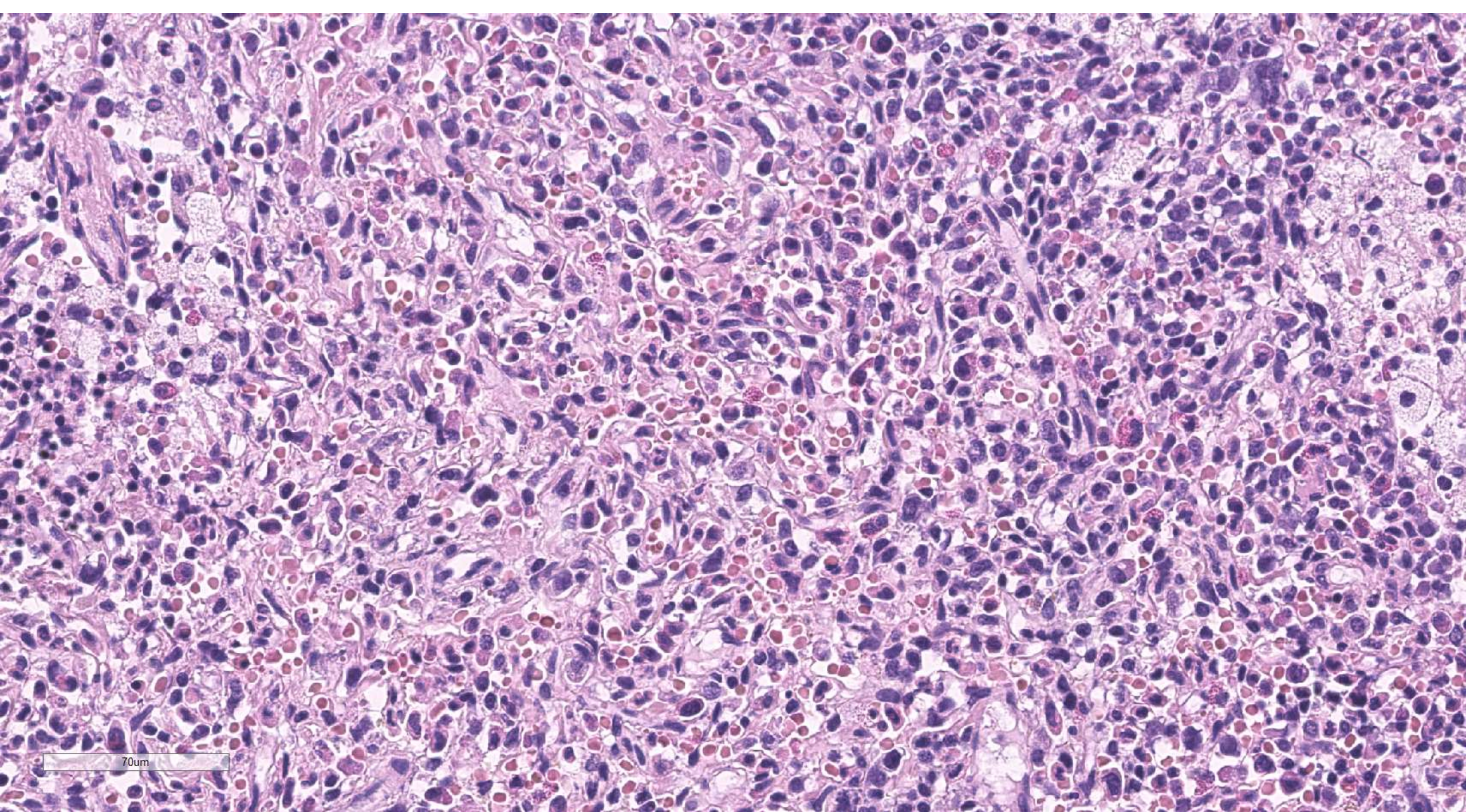
- žena, 60 let
- sentinelová lymfatická uzlina pro tumor pravého prsu, průměru 12 mm

2mm

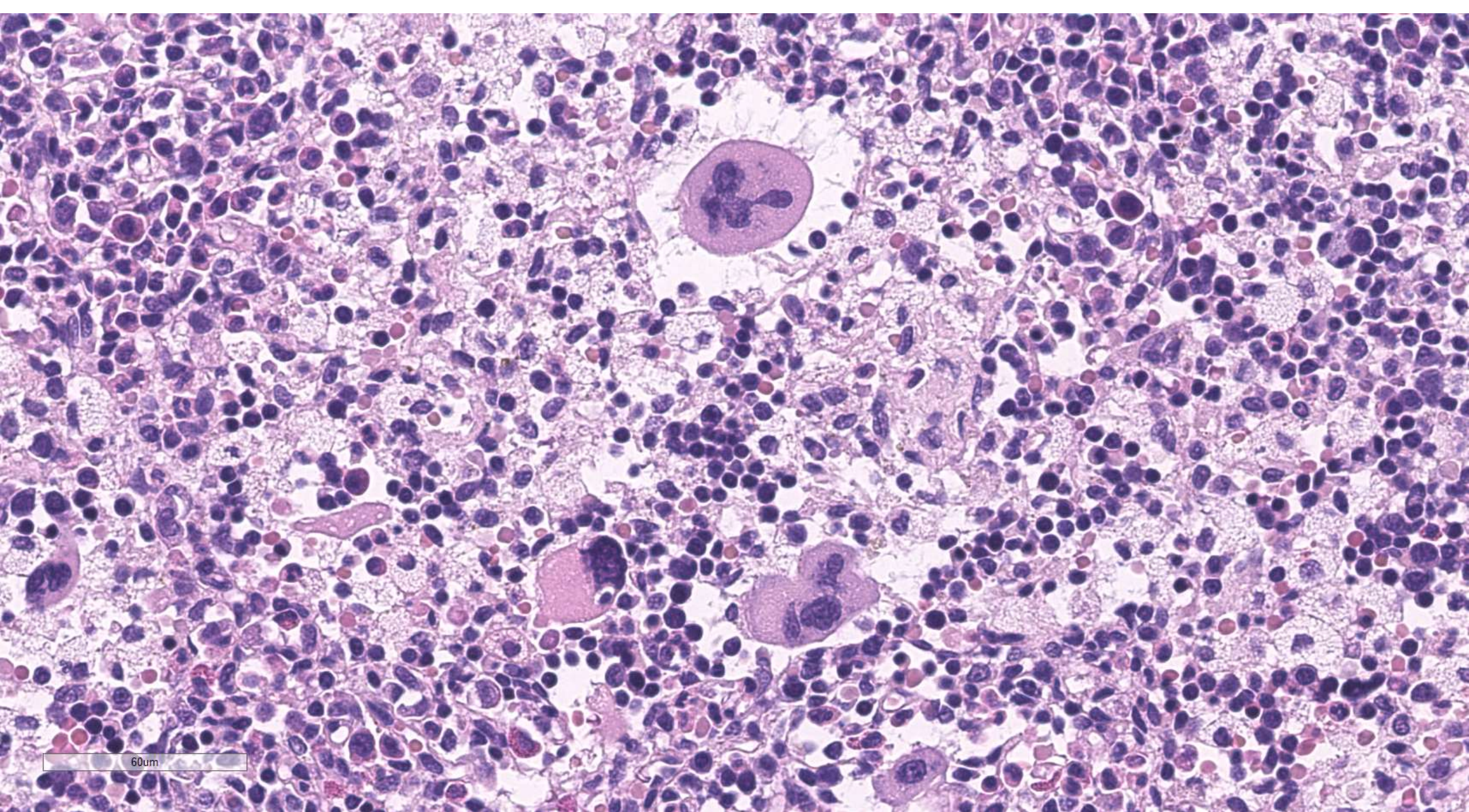




2mm

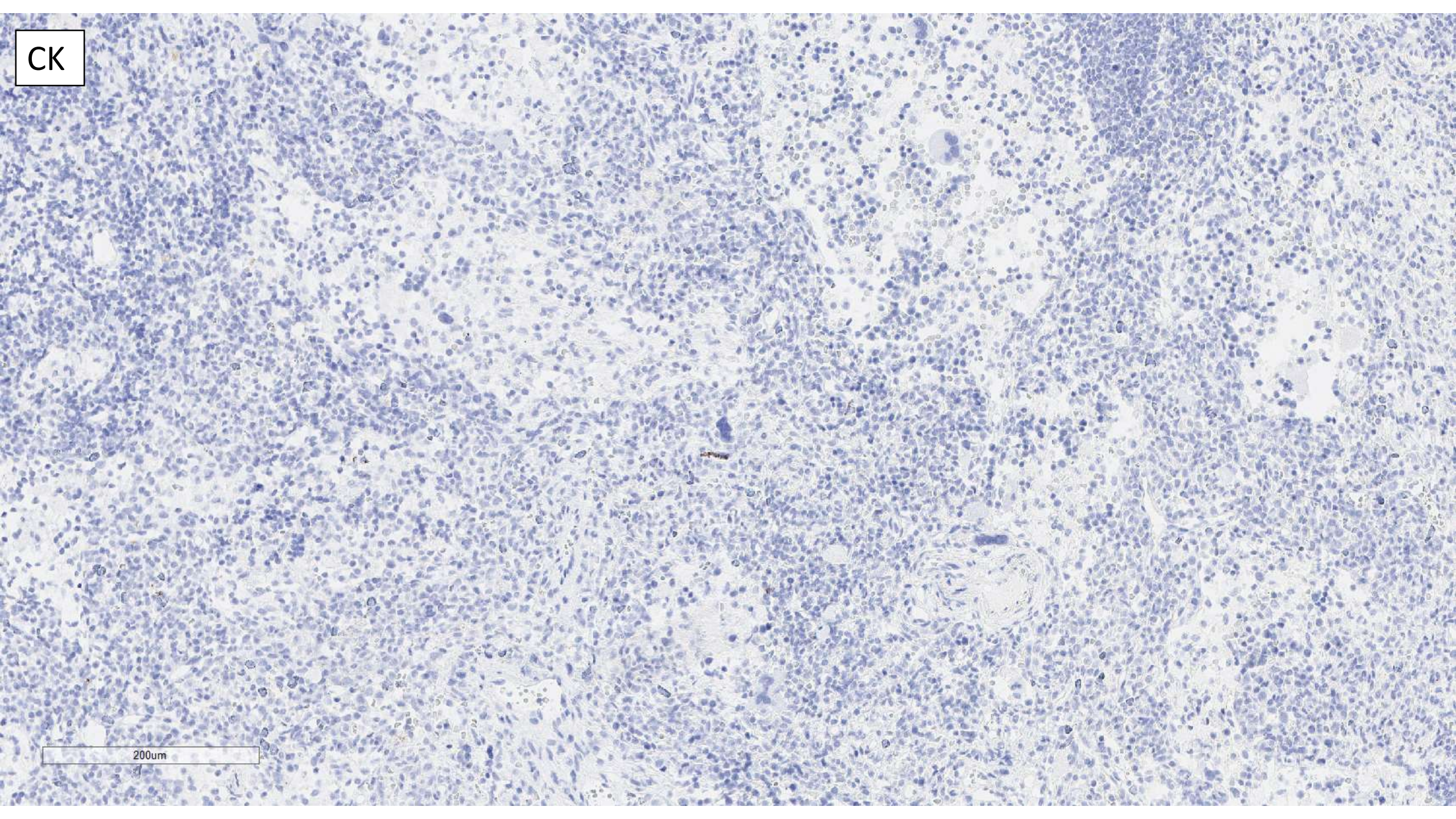


70um



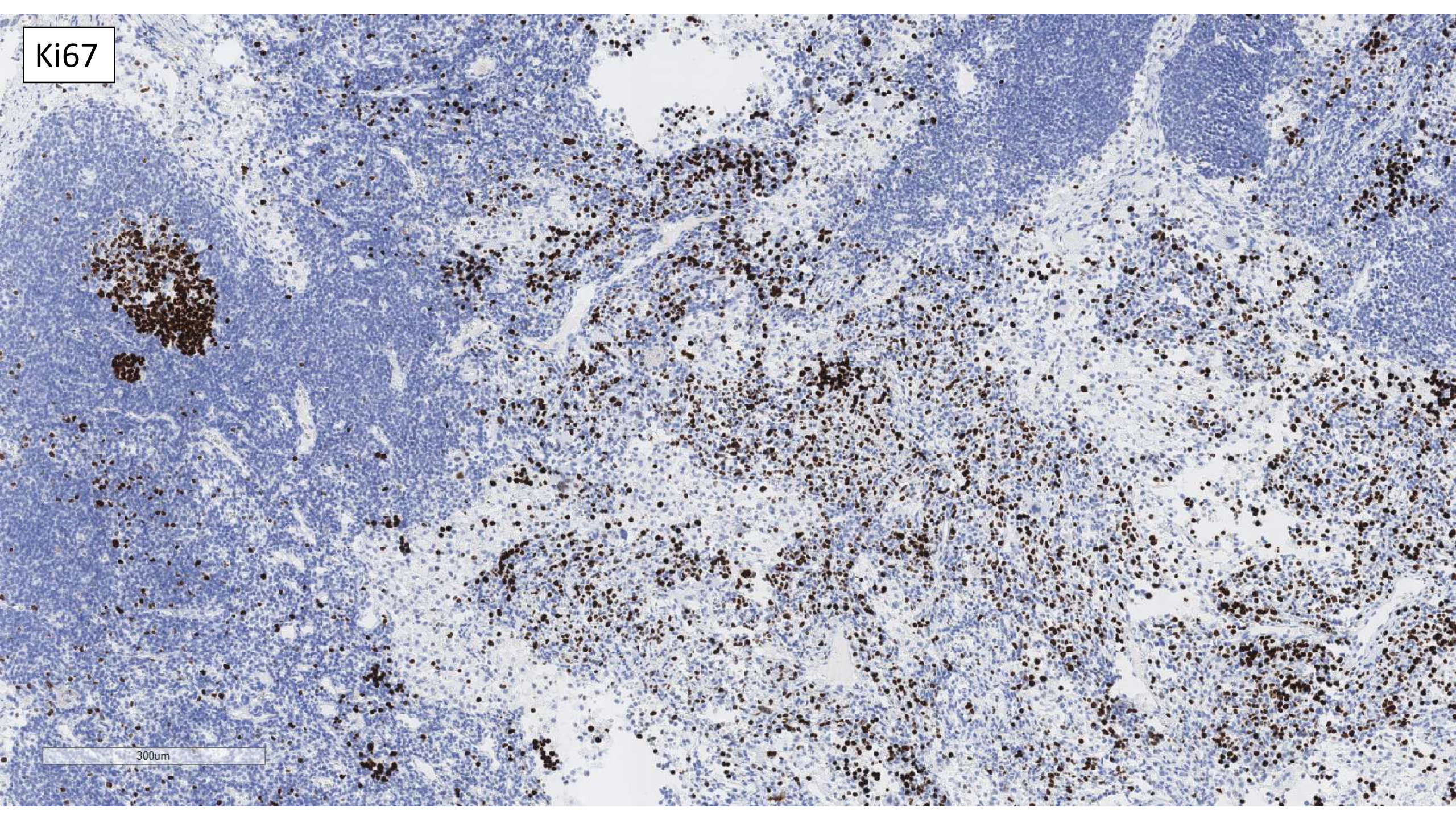
60um

CK



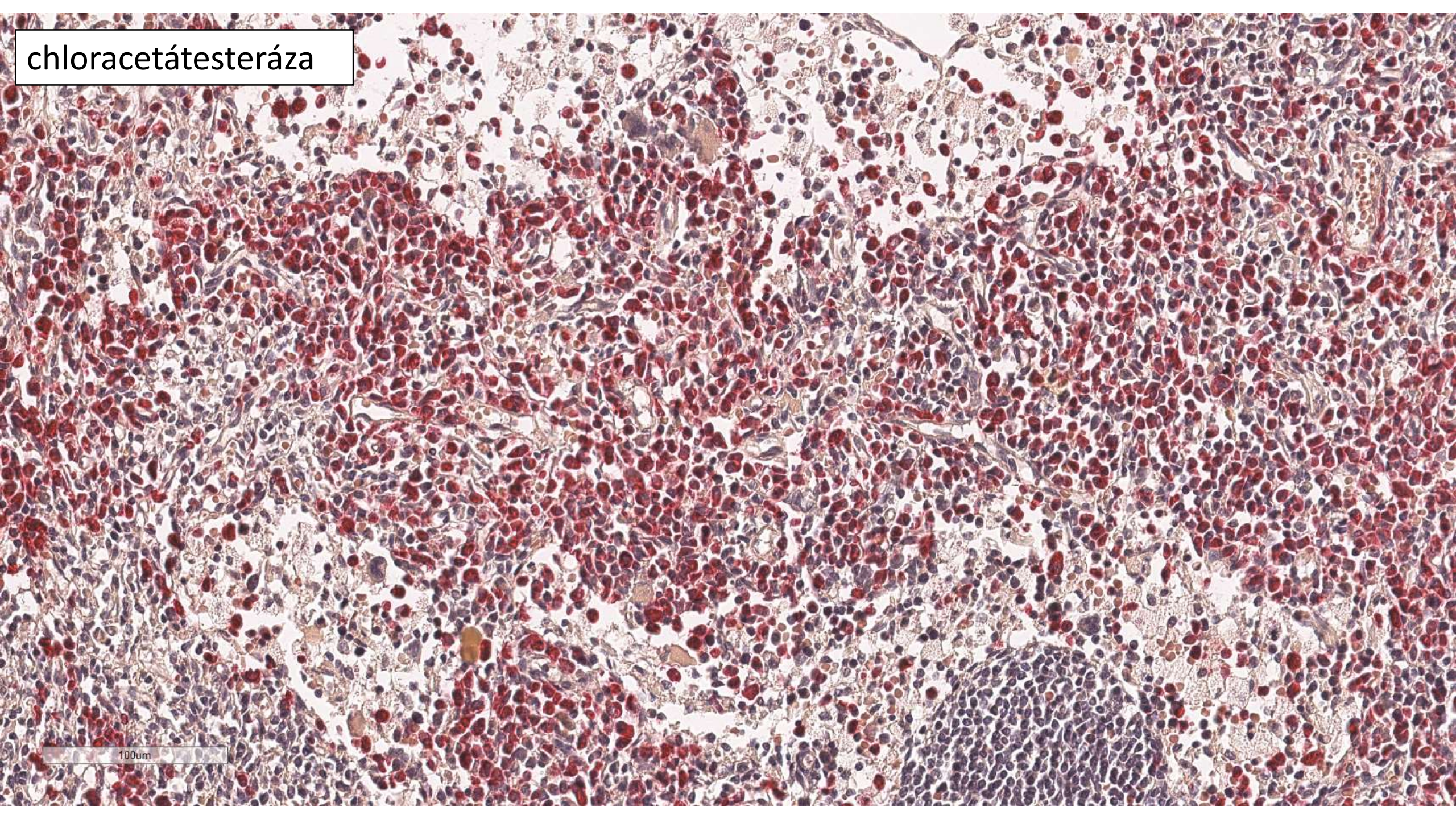
200um

Ki67



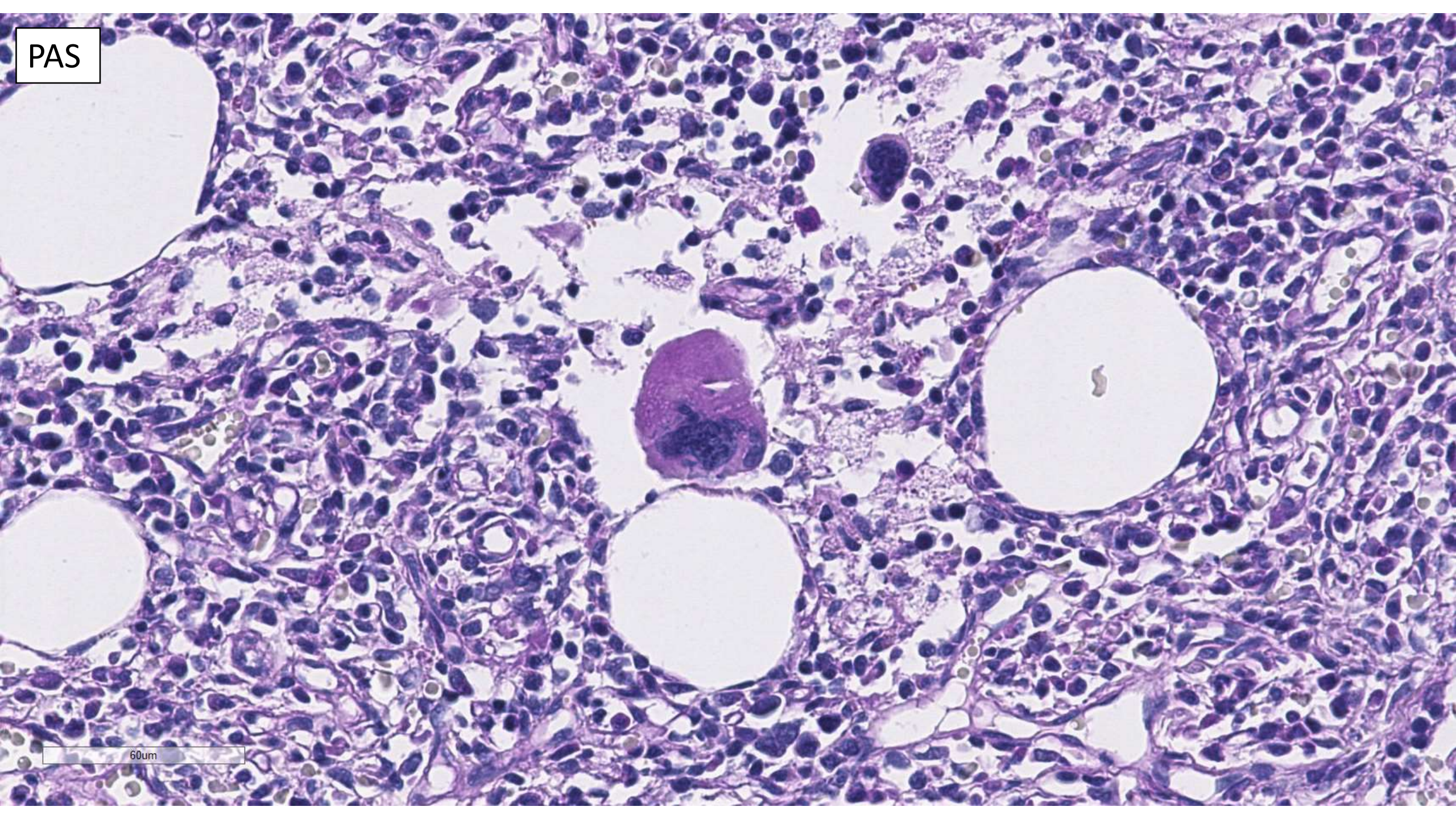
300um

chloracetátesteráza



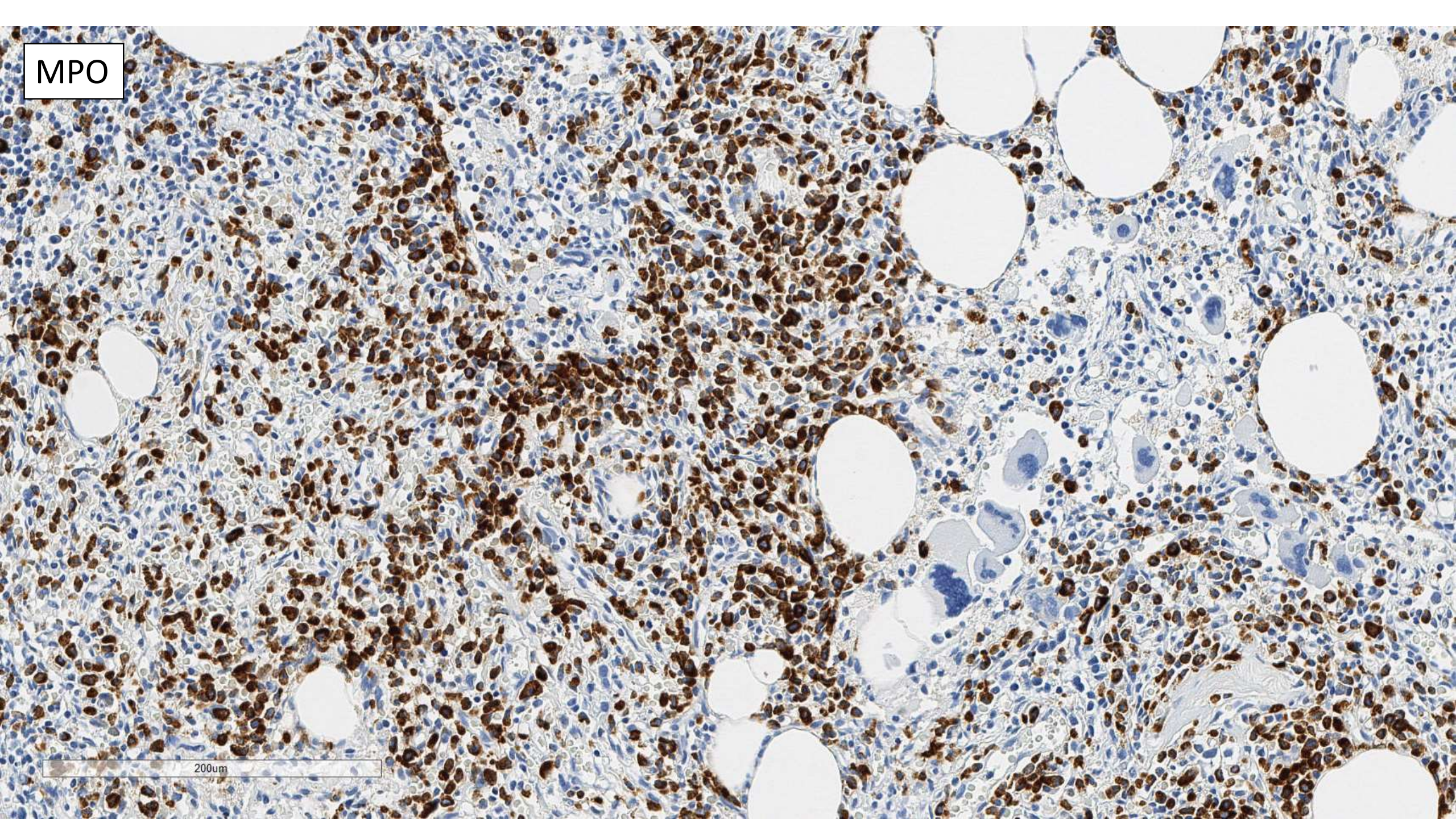
100um

PAS



60um

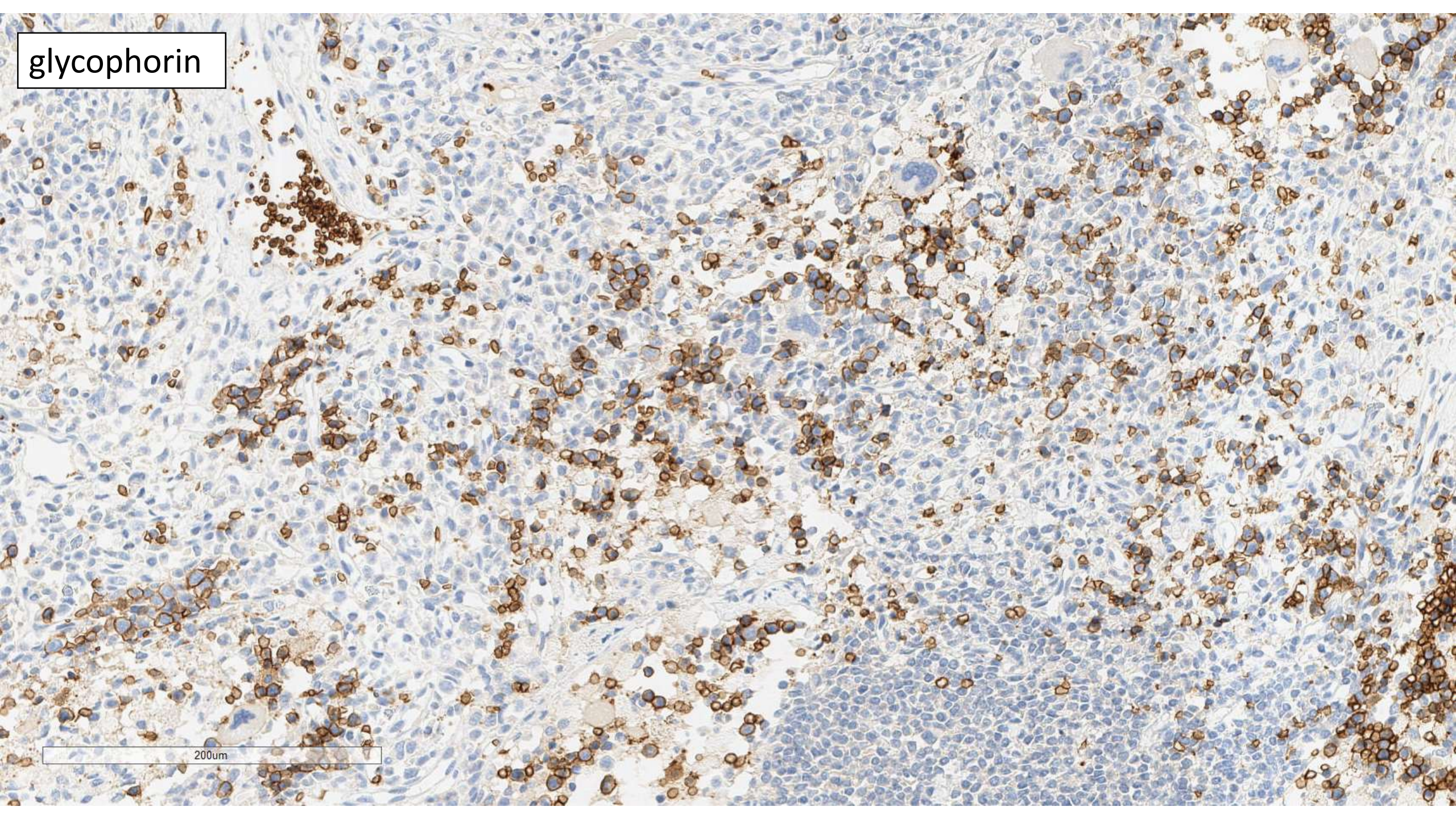
MPO



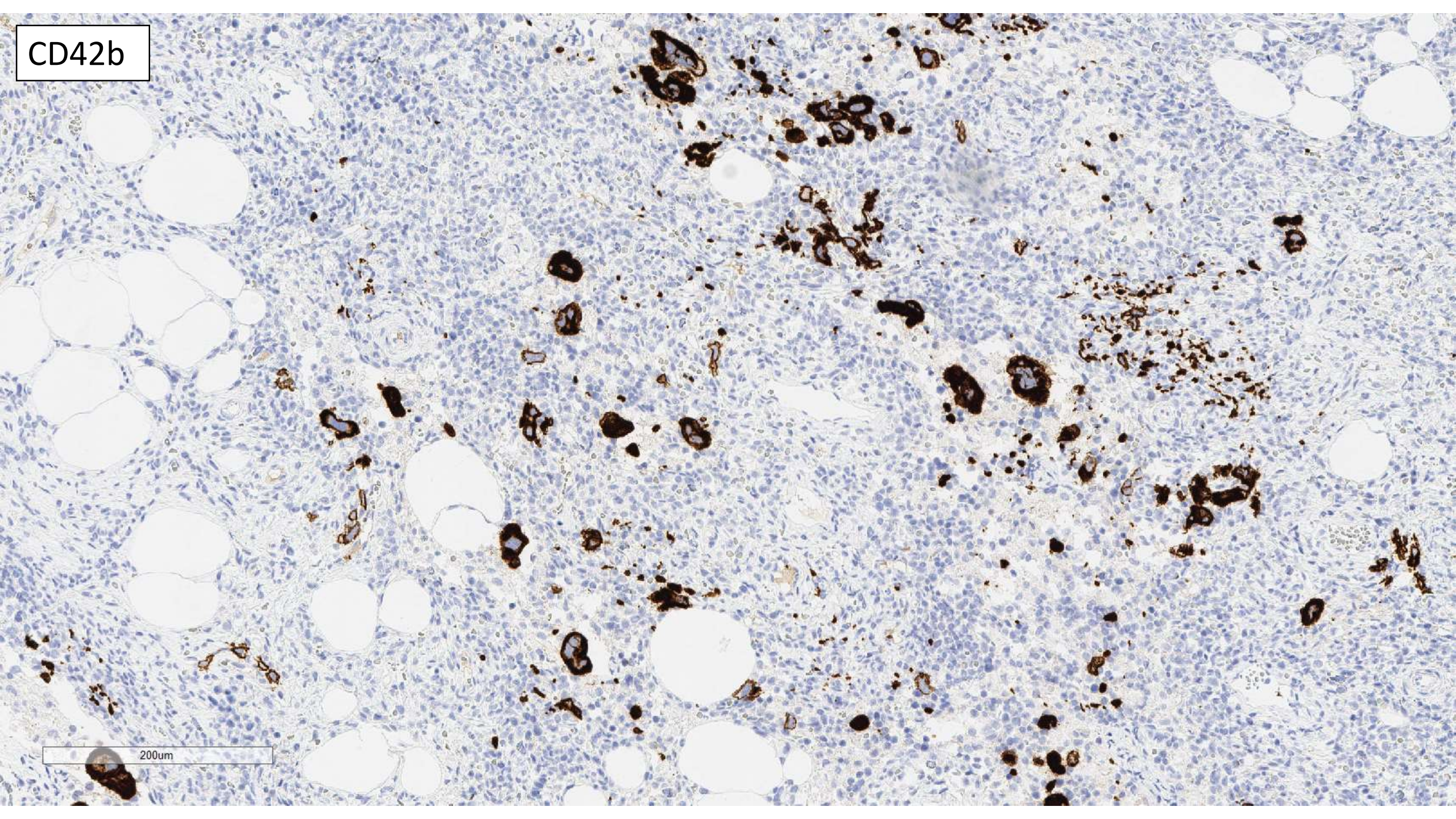
200um

glycophorin

200um

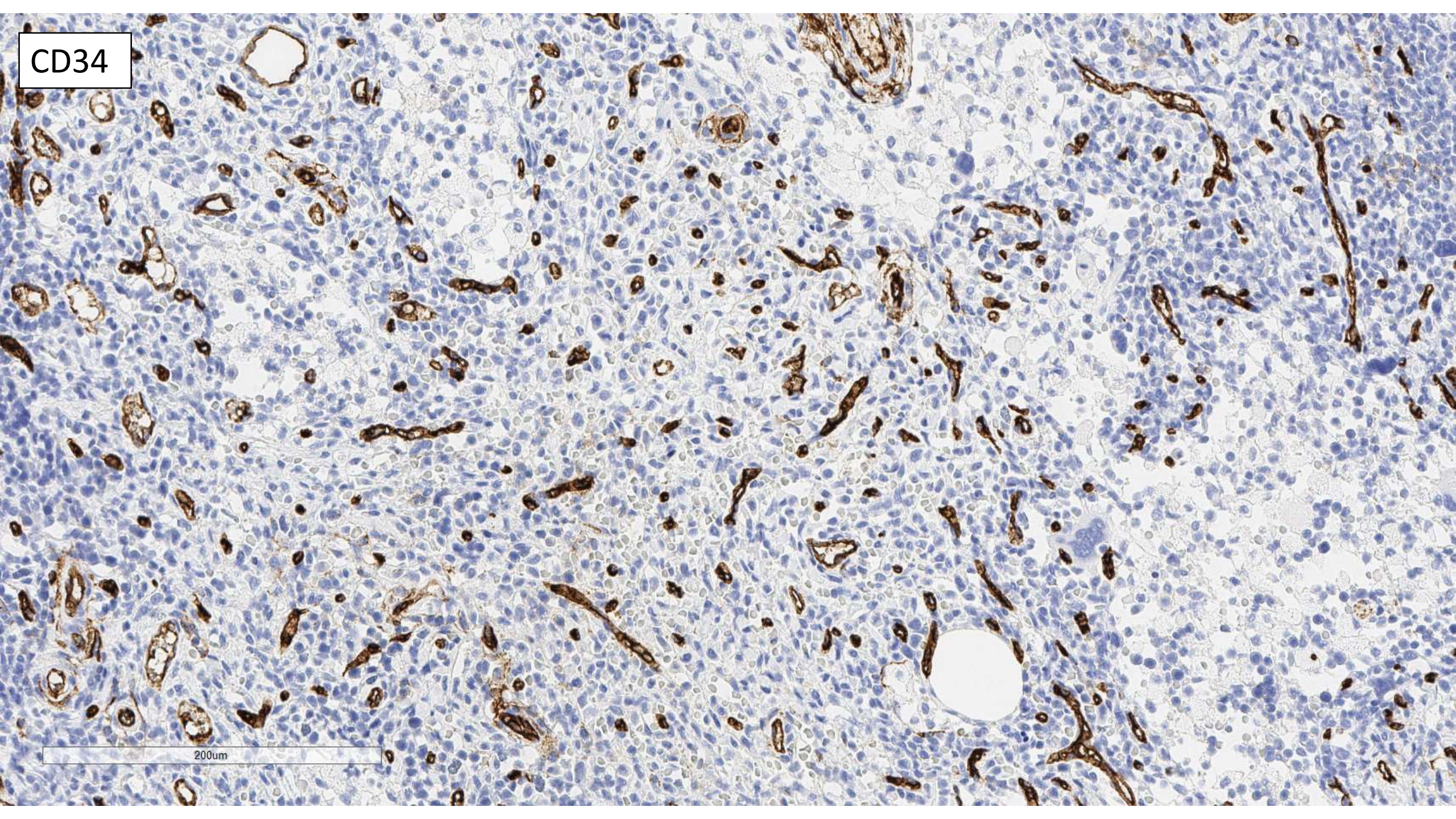


CD42b



200um

CD34



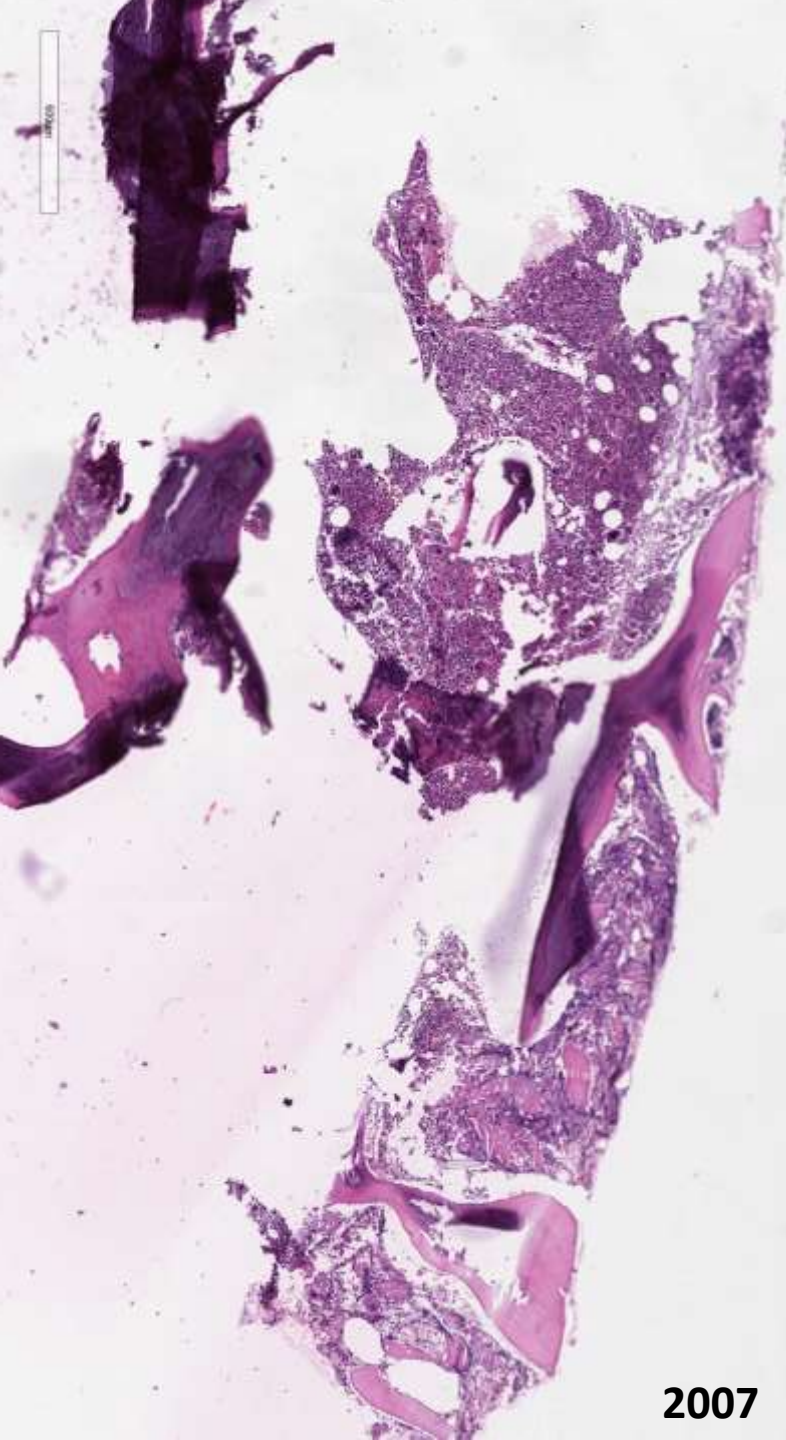
200um

případ č.4

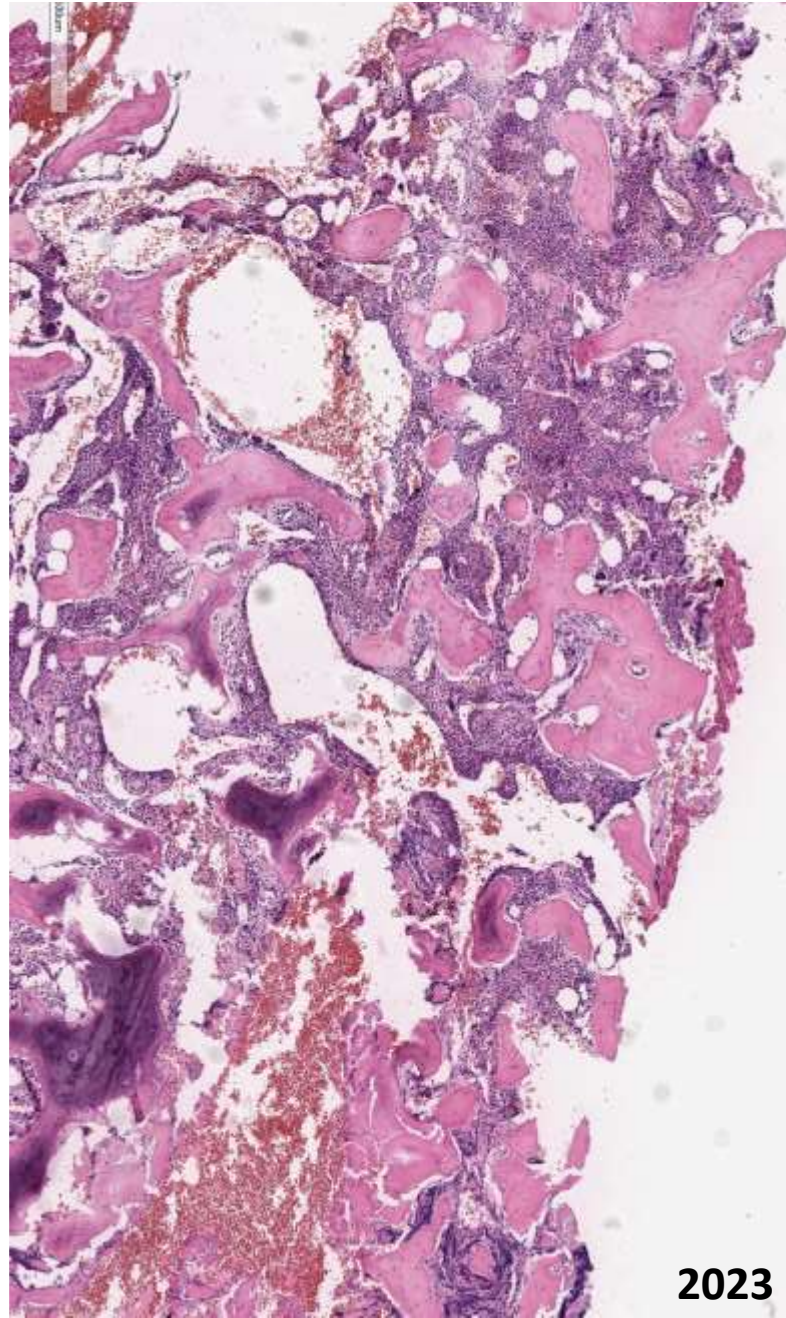
# Diagnóza

**Extramedulární hematopoéza**

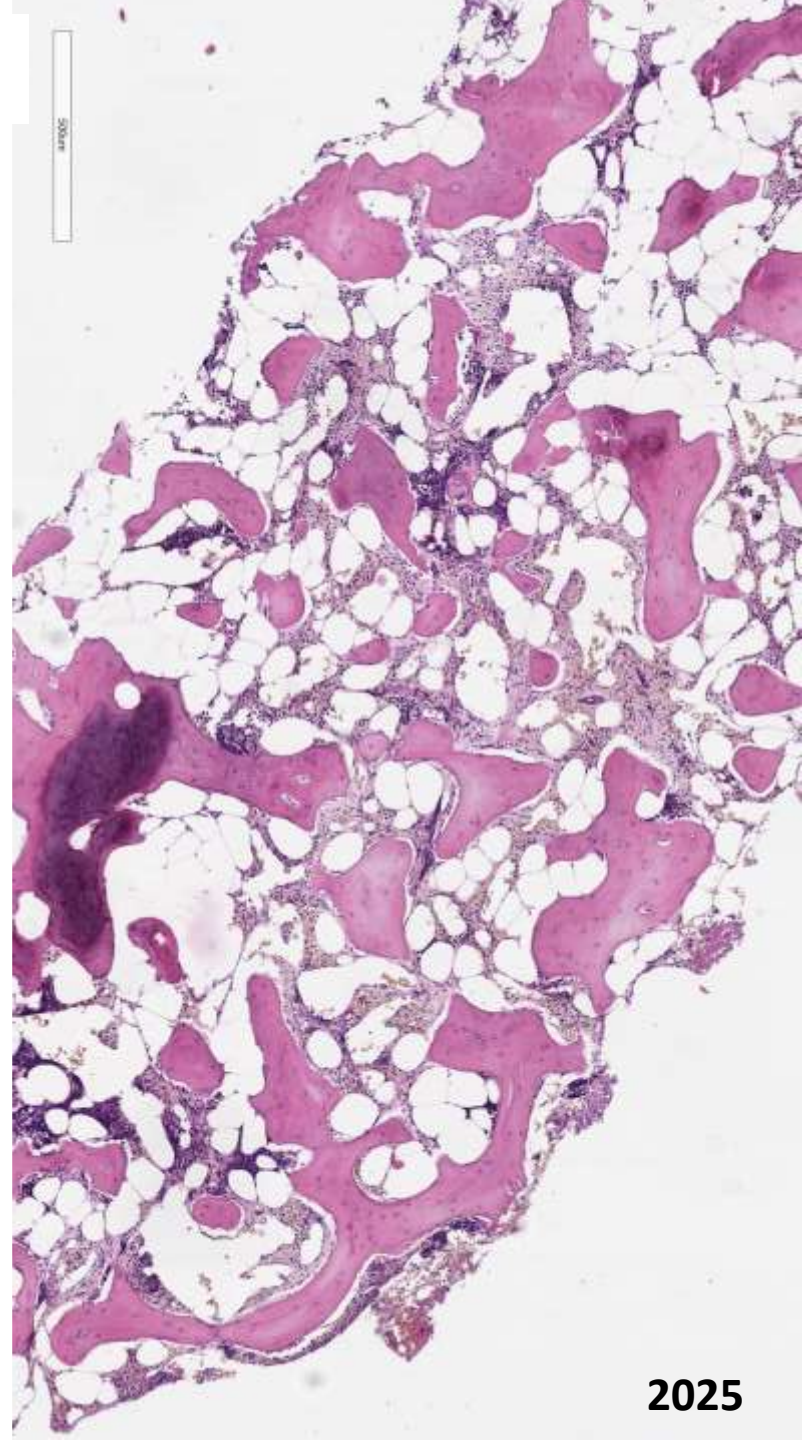
při JAK2+ myeloproliferaci



2007



2023



2025

případ č.4

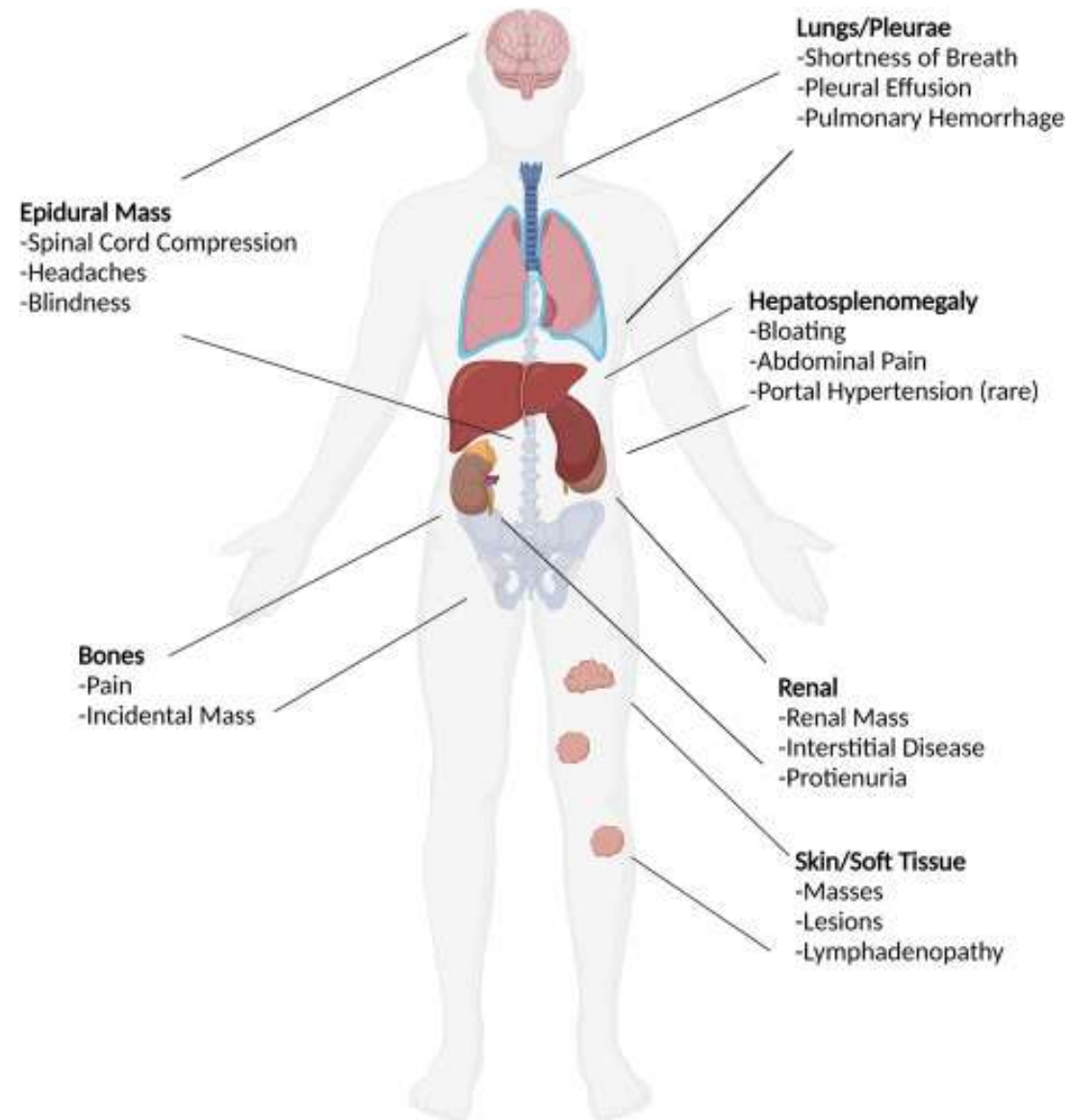
## **Diskuze – Extramedulární hematopoéza u MPO**

- klonální (nádorová)
- nejčastěji u primární myelofibrózy
- fibróza kostní dřeně – klonální hematopoetická buňka osídí další orgány (vhodné niche – KIT ligand, CXCL12)
- slezina a játra

Associated conditions and involved sites among 309 cases of extramedullary hematopoiesis in the absence of myeloproliferative neoplasms

Associated conditions	Involved sites									
	Spleen	Liver	Lymph nodes	Para-spinal region	Retroperitoneal region	Pre-sacral region	Lung	Heart	Mediastinal region	Other sites
All patients ( <i>n</i> = 309)	164	78	20	16	5	7	8	3	2	34
Myelodysplastic syndromes ( <i>n</i> = 41)	23	8	4	1	1	0	2	0	0	6
Acute myeloid leukemia ( <i>n</i> = 28)	12	8	3	1	0	0	1	1	0	6
Hemolytic anemia ( <i>n</i> = 24)	22	2	0	0	1	0	0	0	0	0
Thalassemia ( <i>n</i> = 22)	11	4	0	4	1	1	1	0	1	4
Non-Hodgkin's lymphoma ( <i>n</i> = 19)	15	2	0	0	0	0	0	0	0	2
Immune thrombocytopenic purpura ( <i>n</i> = 17)	15	1	2	0	0	0	0	0	0	0
Metastatic cancer ( <i>n</i> = 17)	3	7	3	1	0	0	1	0	0	3
Plasma cell neoplasms ( <i>n</i> = 12)	4	5	1	0	0	1	0	0	0	2
Hereditary spherocytosis ( <i>n</i> = 8)	5	0	0	2	0	1	0	0	0	0
Cirrhosis ( <i>n</i> = 7)	2	5	0	0	0	0	0	0	0	0
Acute lymphoblastic leukemia ( <i>n</i> = 6)	3	2	1	0	0	0	0	0	0	0
Chronic lymphocytic leukemia ( <i>n</i> = 6)	2	1	1	2	0	0	0	0	0	0
Hodgkin's lymphoma ( <i>n</i> = 5)	2	3	1	0	0	0	1	0	0	1
"Idiopathic" EMH ( <i>n</i> = 12)	2	0	0	3	1	4	2	0	0	0
Others ( <i>n</i> = 93)	43	30	4	2	1	0	0	2	1	10

# Klinické projevy



případ č.4

## **Dif Dg**

- reaktivní vs nádorová extramedulární hematopoéza
- *metastáza metaplastického karcinomu*